

Mecalac

AS1600
AS210



AS1600 - AS210

Mecalac



AS1600

AS210



AS

EXPERIENCE OF YOUR WORKSITE

The Mecalac Swing loader – with high efficiency and speed of action – provides top performance on all construction sites.

Its ability to simultaneously drive, maneuver and pivot is key to the high productivity.

Switch to space management, mobility and stability.

AS1600 / AS210

LET'S HAVE A LOOK AT YOUR + ADVANTAGES

FIRM GRIP ON YOUR WORKSITE WITH POWERFUL SWING LOADER

Mecalac swing loaders are compact, versatile, comfortable, safe and extremely powerful. They are characterised by the highest stability paired with maximum agility and efficiency for every worksite. They allow work tasks to be completed faster and therefore more productively.

The key to productivity is that you can simultaneously drive, steer and swing while performing your daily loading work.

The AS1600 is the flagship in the 11-ton class. It was developed as a professional swing loader to meet the highest demands.

- **AIR CONDITIONING SYSTEM**
- **RIGID CHASSIS**
- **LOAD SENSING HYDRAULIC SYSTEM WITH FLOWSHARING**
- **HYDROSTATIC TRACTION DRIVE WITH MDRIVE**
- **FOUR-WHEEL STEERING FOR MAX. STABILITY AND EXCELLENT MANOEUVRABILITY**
- **INTUITIVE OPERATING CONCEPT**
- **SWIVELLING BUCKET ARM WITH POWERFUL Z^{PLUS}-KINEMATICS**
- **ELECTRO-HYDRAULIC QUICK-COUPLER**
- **OPTIMAL ACCESS TO ALL SERVICE POINTS**

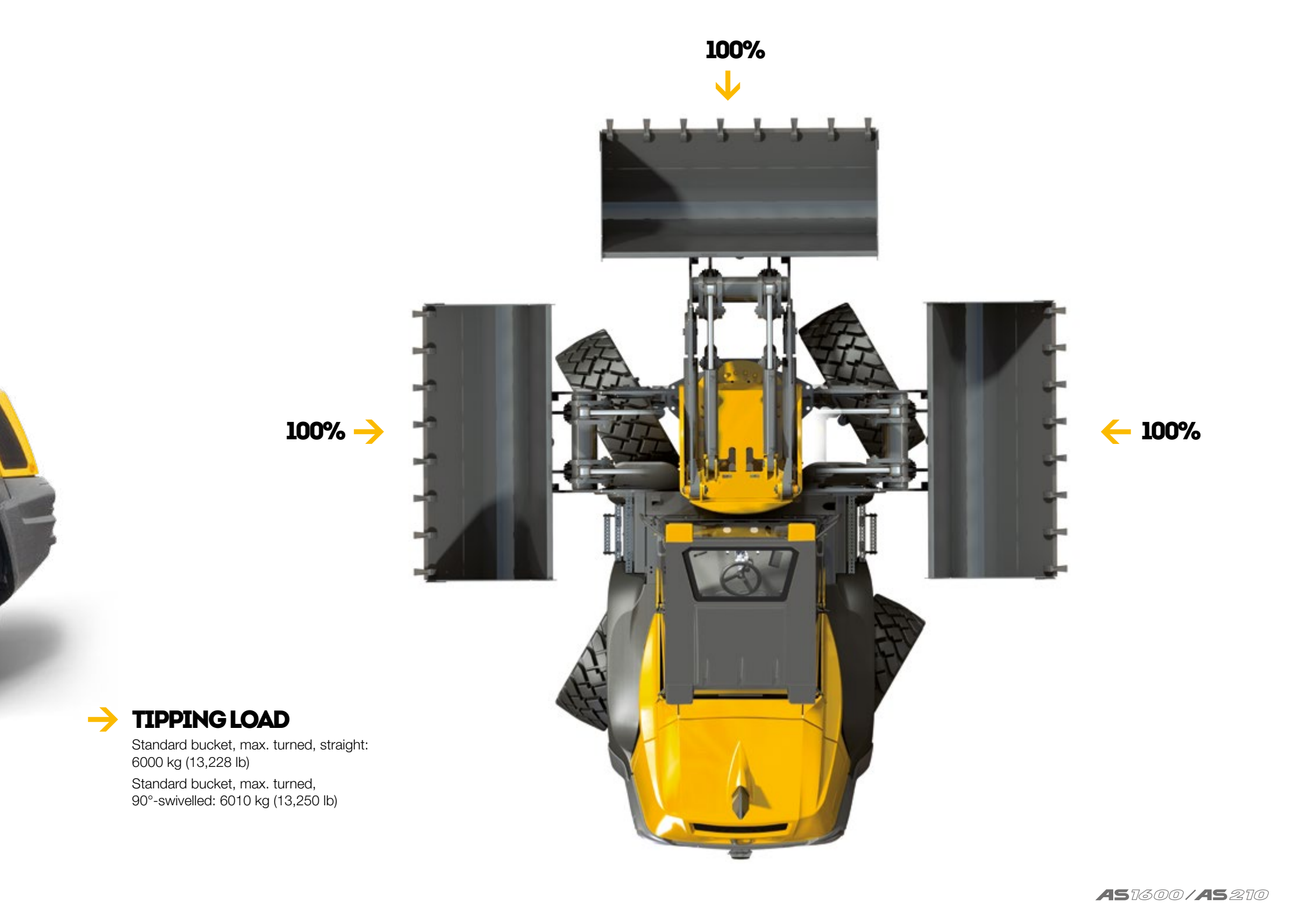


AS1600/AS210

↘ **AS1600**

**SWING
RANGE
OF 180°+
WITHOUT
TIPPING
LOAD LOSS**





100%



100% →

← 100%

→ **TIPPING LOAD**

Standard bucket, max. turned, straight:
6000 kg (13,228 lb)

Standard bucket, max. turned,
90°-swivelled: 6010 kg (13,250 lb)

LET'S HAVE A LOOK AT YOUR + ADVANTAGES

- **AIR CONDITIONING SYSTEM**
- **MANUALLY SWITCHABLE DIFFERENTIAL LOCK
IN FRONT AND REAR AXLES**
- **ELECTRO-HYDRAULIC QUICK-COUPLER**
- **LOW-MAINTENANCE, PLAY-FREE CHAIN
OPERATED SWING SYSTEM WITH CONSTANT
TURNING SPEED AND -POWER**
- **POWERFUL Z^{PLUS}-KINEMATICS WITH PRECISE
PARALLEL LIFTING AND FINAL POSITION
CUSHIONING OF THE LIFT CYLINDERS**
- **HIGH PERFORMANCE DEUTZ TURBO
DIESEL ENGINE**
- **HYDROSTATIC FOUR-WHEEL STEERING
FOR MAX. STABILITY AND EXCELLENT
MANOEUVRABILITY**
- **PAYLOAD DEPENDENT AXLE SUPPORT**
- **LOW-MAINTENANCE WET LAMELLA BRAKE**
- **RIGID SINGLE-COMPONENT
CHASSIS FOR MAXIMUM STABILITY**

129KW / 175HP AT 2200 RPM

DUMP HEIGHT 3.42 M

**MAX. SWING RANGE OF 180° (2 X 90°)
WITH ALL ATTACHMENTS**



SERVICES

PERFORMANCE, PROFITABILITY, LONGEVITY

DISCOVER OUR SERVICES

MECALAC PREMIUM LUBRICANTS

Premium lubricants to get the best out of your machines:

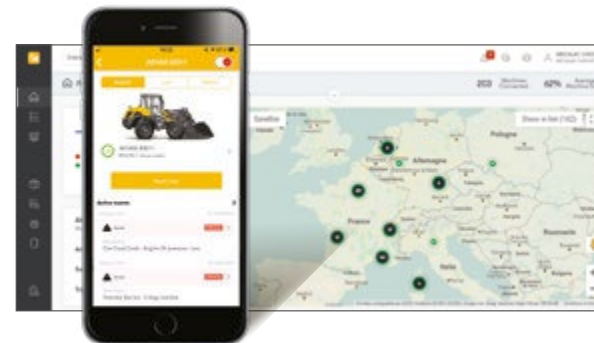
- Extended machine life
- Extended warranty and extended oil change intervals
- All-weather efficiency



MY MECALAC CONNECTED SERVICES

To optimise the use of its machines, MECALAC offers a range of telematics services:

- Remote fleet management
- Access to all machine usage data of the machines
- Limited machine downtime thanks to preventive maintenance



MECALAC GENUINE PARTS

Only genuine MECALAC parts ensure optimum service life and maximum performance:

- Certified genuine parts
- Maintenance kits
- Extended warranty



MECALAC TRAINING

Make full use of the full potential of your Mecalac machines:

- Efficient use
- Individual coaching
- Intensive practice



MECALAC FINANCIAL SOLUTIONS

A complete range of financial products and associated services to meet your specific needs:

- Machine purchase
- Machine rental
- Competitive rates



WARRANTY EXTENSIONS

Our solutions are well-adapted to your needs to maximise the life of your machines:

- Customised contracts
- Peace of mind
- Controlled expenses



The list of services offered may vary depending on your country.
Consult your local Mecalac dealer for details.



TECHNICAL DATA

→ **AS1600 / AS210**



AS1600 / AS 210

AS1600 TECHNICAL DATA

DATA

| | |
|--|---|
| Operating weight | 10,920 kg (24,074 lb) |
| Engine power | 100 kW (136 hp / 134 imperial hp) |
| Bucket capacity | 1.6 – 2.5 m³ (2.1 – 3.3 yd³) |
| <ul style="list-style-type: none"> Comfortable driver's cab with rops safety system Joystick controls Servo-assisted working hydraulics High-performance, power-controlled hydrostatic four-wheel drive Four-wheel steering | <ul style="list-style-type: none"> Planetary axes with self locking differential in front axle Low-maintenance wet lamella brakes in front and rear axle Z^{PLUS}-kinematics with precise parallel lifting Electro-hydraulic quick-coupler Wide range of attachments |

ENGINE

| | |
|--|---|
| Low-noise, water-cooled Deutz TCD 3.6 L4 turbo diesel engine with intercooler. Common Rail injection system, cooled external exhaust gas recirculation (EGR), diesel oxidation catalyst (DOC), diesel particulate filter (DPF) and selective catalytic reduction (SCR) | |
| | EU Stage V U.S. EPA Tier 4 Final* |
| Net power at acc. to ISO 14396 | 2200 rpm 100 kW (136 hp / 134 imperial hp) |
| Max. torque at acc. to ISO 14396 | 1600 rpm 500 Nm |
| Air intake filter: 2-level dry-air filter with safety cartridge | • |
| Electrical system: | |
| - Operating voltage | 24 V |
| - Battery capacity | 2 x 95 Ah |
| - Alternator rating | 100 A |

*Depending on your Local Legislation - Environmental Protection Agency (EPA)

DRIVE

| | |
|---|----------------------|
| Hydrostatic drive with automotive control including MDRIVE (hand throttle and inching speed can be coupled to the pedal), 3 stages (jolt-free), multifunctional lever (joystick) for drive and working hydraulics control | • |
| Axes: | |
| planetary axes with four-wheel steering for maximum flexibility, oscillating rear axle | • |
| Differential lock: | |
| Automatic self-locking differential in front axle | • |
| Wheels: tire size | 17.5-25 |
| - Optionally | 17.5 R25 |
| - Optionally | 550/65 R25 |
| Speeds: | |
| - Road gear | 0-20 km/h (0-12 mph) |
| - Field gear | 0-15 km/h (0-9 mph) |
| Oscillation: max. oscillation angle | +/-10° |

NOTE: METRIC MEASUREMENTS ARE THE CRITICAL VALUES

- 1 Litre = 0.26417 US Liquid Gallons
- 1 Litre = 0.21997 Imperial Liquid Gallons

BRAKES

| | |
|--|---|
| Operating brakes: | |
| 1. hydraulically operated wet lamella brake in front and rear axle, acting on all 4 wheels | • |
| 2. hydrostatic inching brake, acting on all 4 wheels | |
| Parking brake: | |
| Spring-loaded wet lamella brake in rear axle, acting on all 4 wheels | • |

STEERING

| | |
|--|---------------------|
| Hydrostatic 4-wheel steering with automatic alignment (4 steering modes: 4-wheel, front wheel, crab and reduced crab steering) | |
| max. steering angle | +/-35° |
| Turning radius measured over rear end | R = 4350 mm (14'3") |

HYDRAULIC SYSTEM

| | |
|---|---------------------------|
| Dual-circuit system | |
| 1. Load sensing working hydraulics circuit (lift/lower, tilt, accessories), and swivel function (via priority valve); four-fold control valve with primary and secondary protection; with servo-controlled joystick operation | |
| Max. operating pressure at 2200 rpm | 138 l/min (36,46 gal/min) |
| Max. oil flow for auxiliary hydraulics | and 235 bar (3408 psi) |
| 2. Circuit constant pump (swivelling), single control valve with primary and secondary protection | • |
| Float position for lifting cylinders | • |
| Boom suspension | • |

PERFORMANCE DATA

| | |
|--|---------------------|
| Bucket position: | |
| - Tilting angle | 45° |
| - Dumping angle, top | 53° |
| Lifting force | 69 kN (15,511 lbf) |
| Breakout force | 80 kN (17,984 lbf) |
| Thrust force | 90 kN (20,232 lbf) |
| Tipping load: | |
| - Standard bucket, max. turned, straight | 6000 kg (13,228 lb) |
| - Standard bucket, max. turned, 90°-swivelled | 6010 kg (13,250 lb) |
| Payload on forks: | |
| - Max. turned, frontal, even terrain | 4125 kg (9,094 lb) |
| - Max. turned, max. swivelled, even terrain | 3945 kg (8,697 lb) |
| Tipping load according to ISO 14397, payload according to EN 474-3 | |

FILLING CAPACITIES

| | |
|----------------------------|--------------------------|
| Engine with filter | approx. 8 l (2.1 gal) |
| Fuel tank | approx. 150 l (39.6 gal) |
| AdBlue ®-tank | approx. 10 l (2.6 gal) |
| Front axle | approx. 21 l (5.5 gal) |
| Rear axle | approx. 18.5 l (4.9 gal) |
| Hydraulic system with tank | approx. 160 l (42.3 gal) |
| Distributor gear | approx. 3.4 l (0.9 gal) |

CHASSIS

| | |
|--|---|
| Rigid single-frame chassis with rear axle support for maximum stability, especially when working in swivelled position | • |
| Sealed articulated/oscillated pivot with play-free, chain operated swinging system with constant turning speed and power | • |
| Swing boom system with Z ^{PLUS} -kinematics with precise parallel lifting | • |
| Operator's cab with flexible four-point mountings for maximum driver comfort and minimum noise levels | • |
| The servo-assisted joystick controls are smooth, accurate and long lasting | • |



AS1600

STANDARD / OPTIONAL EQUIPEMENT

STANDARD FEATURES

| | |
|---|--------|
| Amplly dimensioned ROPS panoramic comfort cabin. The driver's door, which can be opened by 150 °, and the large, wide-opening side windows can be locked within the machine contours. | • |
| Air-conditioning system | • |
| Single piece floor mat for easy cleaning | • |
| Tinted windows | • |
| Parallel guided windscreen wiper | • |
| Rear wiper | • |
| Front and rear screen washing device | • |
| Heated rear window | • |
| 2 large fold away outside mirrors | • |
| Roof hatch | • |
| 3-Step drive selector switch | • |
| Intuitive modular control panel with onboard computer for machine monitoring and machine settings like: | • |
| - Flow volume of auxiliary hydraulic function | |
| - Selection of the speed in the low gear | |
| Speedometer | • |
| Steering column is adjustable in height and inclination | • |
| Ergonomically adjustable joystick | • |
| Multiply adjustable driver's seat | • |
| Safety belt | • |
| Sun visor | • |
| Heating and ventilation system with recirculation air function | • |
| Main battery switch | • |
| Interior light | • |
| Socket | 24 V |
| Coat hook | • |
| Storage pockets in the cabin | • |
| Lockable storage compartment at the chassis | • |
| 2 driving lights on cabin roof | • |
| 2 working lights rear | • |
| 2 working lights at monoboom | • |
| Single key system | • |
| Hydraulic quick coupler with electric safety device | • |
| Towing coupling | • |
| Fastening and lifting points | • |
| Proportional 1 st and 2 nd auxiliary hydraulics circuit is integrated in the joystick | • |
| Color scheme | yellow |
| Operator's cabin, axles and wheels | grey |
| Interior mirror | • |

OPTIONAL EQUIPMENT

| | |
|---|------------------|
| Version | 40 km/h (25 mph) |
| Wide tires | • |
| Beacon light | • |
| Acoustic back up alarm | • |
| FOPS grid for cabin roof | • |
| Permanent function for auxiliary hydraulics | • |
| Safety valves | • |
| Bio-degradable oil fill for hydraulic system | • |
| Pressureless return line | • |
| Left joystick | • |
| Lockable differential on rear axle | • |
| Air suspended driver's seat | • |
| Radio | • |
| Immobilizer | • |
| Special corrosion protection for salt applications | • |
| Attachments as per separate list as pallet fork, load hook etc. | • |

EMISSIONS

| | |
|--|-------------------------------|
| Engine: emissions according to Stage V - EU-RL 97/68 | • |
| Noise emission: | |
| - Sound power level LWA ¹ | 102 dB(A) |
| - Acoustic power level LpA ² | 75 dB(A) |
| Vibrations: | |
| - Vibration total value ³ | < 2.5 m (8'2")/s ² |
| - Effective vibration level ⁴ | < 0.5 m (1'7")/s ² |

¹ According to 2000/14/EG

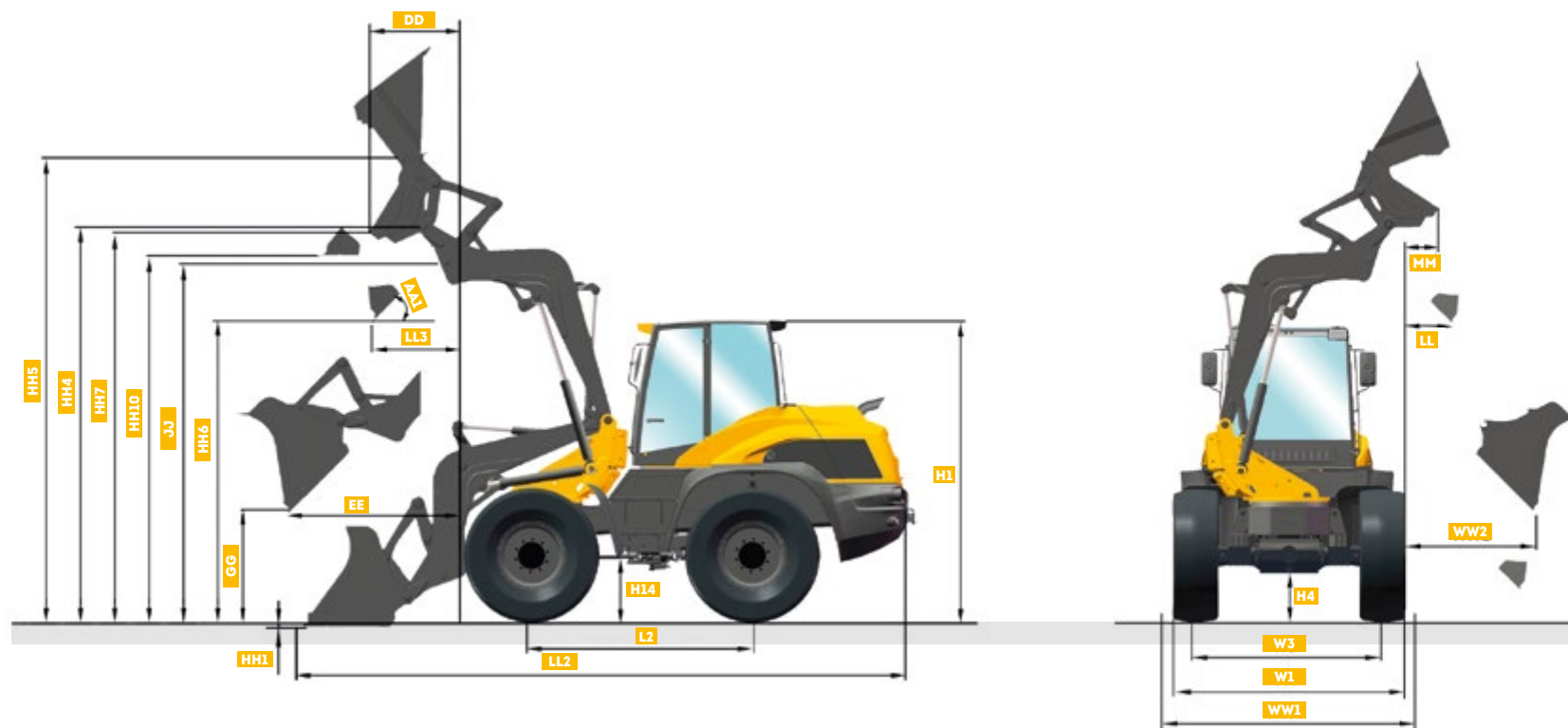
² According to ISO 6396

³ According to ISO/TR 25398

⁴ According to ISO/TR 25398

**Standard and optional equipment may vary.
Consult your Mecalac dealer for details.**

AS1600 **TECHNICAL DATA**



MACHINE DIMENSIONS

| BUCKET | STD. 1.6 m³ (2.1 yd³) | 4x1 - 1.6 m³ (2.1 yd³) |
|--------|---|------------------------|
| AA1 | Tipping angle max. | 53° |
| DD | Dumping width at max. lifting height | - |
| EE | Dumping width max. | 1915 mm (6'3.4") |
| GG | Dumping height at max. width | 1100 mm (3'7.3") |
| H1 | Overall height | 3100 mm (10'2") |
| H4 | Ground clearance axles gear box | 440 mm (1'5.3") |
| H14 | Ground clearance gear box | 500 mm (1'7.7") |
| HH1 | Plunge depth | 110 mm (0'4.3") |
| HH4 | Locking bolt height | 3985 mm (13'0.9") |
| HH5 | Working height max. | 4975 mm (16'3.9") |
| HH6 | Dumping height at max. lifting height and max tipping angle | 3100 mm (10'2") |
| HH7 | Dumping height at max. lifting height | - |

MACHINE DIMENSIONS

| BUCKET | STD. 1.6 m³ (2.1 yd³) | 4x1 - 1.6 m³ (2.1 yd³) |
|--------|---|------------------------|
| HH10 | Loading height at max. lifting height | 3750 mm (12'3.6") |
| JJ | Loading height | 3390 mm (11'1.5") |
| L2 | Wheelbase | 2280 mm (7'5.8") |
| LL | Dumping width at max. lifting height to the side | 550 mm (1'9.7") |
| LL2 | Overall length | 6580 mm (21'7.1") |
| LL3 | Dumping width at max. lifting height and 45 tipping angle | 1070 mm (3'6.1") |
| MM | Dumping width at max. lifting height to the side | - |
| W1 | Width over tyres | 2460 mm (8'0.9") |
| W3 | Wheel track | 1980 mm (6'6") |
| WW1 | Width over bucket | 2480 mm (8'1.6") |
| WW2 | Dumping width max. to the side | 1495 mm (4'10.9") |

AS1600 **TECHNICAL DATA**



| MACHINE DIMENSIONS | | |
|--------------------|--|-----------------|
| | FORK | LOAD HOOK |
| AA3 | Tipping angle max. | 25° |
| BB | Nominal reach with payload | 940 mm (3'1") |
| CC | Max. reach | 1535 (5'0.4") |
| DD | Reach at max. lifting height | 680 (2'2.8") |
| FF | Loading reach max. | 3255 (10'8.1") |
| GG | Loading height at max. reach | 1750 (5'8.9") |
| HH | Loading height at max. lifting height | 5145 (16'10.6") |
| HH1 | Loading height at min. lifting | 60 (0'2.4") |
| HH9 | Overload height at max. lifting height | 3735 (12'3") |
| KK | Max. reach to the side | 1110 (3'7.7") |
| LL | Payload reach to the side at min. lifting height | 1415 (4'7.7") |
| LL2 | Overall length | 7015 (23'0.2") |
| MM | Reach to the side at max. lifting height | 305 (1'0.4") |
| PP | Min. height on the side | 780 (2'6.7") |
| RR | Loading reach max. on the side | 2845 (9'4") |

All data based on standard tires.
 All data are non-binding.
 Changes are reserved without notice.
 The order confirmation is exclusively decisive

AS 210 **TECHNICAL DATA**

DATA

| | |
|--|--|
| Operating weight | 15,100 kg (33,289 lb) |
| Engine power | 129 kW / 175 hp (127.2 imperial hp) |
| Bucket capacity | 2.1 – 3 m³ (2.75 - 3.92 yd³) |
| <ul style="list-style-type: none"> Comfortable driver's cabin with ROPS safety system Joystick controls Servo-assisted working hydraulics High-performance, power-controlled hydrostatic four-wheel drive Four-wheel steering | <ul style="list-style-type: none"> Planetary axles with manually switchable differential lock in front and rear axles (locking factor 100%) Low-maintenance wet lamella brakes Z^{PLUS}-Kinematics with precise parallel lifting Hydraulically controlled quick-coupler Wide range of attachments |

ENGINE

| | |
|--|--|
| Low-noise, water-cooled Deutz TCD 6.1 L4 turbo diesel engine with intercooler. Common Rail injection system, cooled external exhaust gas recirculation (EGR), diesel oxidation catalyst (DOC), diesel particulate filter (DPF) and selective catalytic reduction (SCR) | |
| | EU Stage V U.S. EPA Tier 4 Final* |
| Net power at acc. to ISO 14396 | 2200 rpm - 129 kW / 175 hp (127.2 imperial hp) |
| Max. torque at acc. to ISO 14396 | 1450 rpm 825 Nm |
| Air intake filter: 2-level dry-air filter with safety cartridge | • |
| Electrical system: | |
| - Operating voltage | 24 V |
| - Battery capacity | 2x100 Ah |
| - Alternator rating | 100 A |

*Depending on your Local Legislation - Environmental Protection Agency (EPA)

DRIVE

| | |
|--|--|
| Hydrostatic drive with automotive control, 3 stages, gear-engage under load, multifunctional lever (joystick) for drive and working hydraulics control | • |
| Axles: | • |
| Planetary axles with four-wheel steering for maximum flexibility, oscillating rear axle | • |
| Differential lock: manually switchable differential lock in front and rear axles locking factor 100% | • |
| Wheels: - Tyre size | 20.5-25 |
| - Optional | 650/65 R25 |
| Speeds: - Road gear | 0-20 km/h (0-12 mph) |
| - Field gear | (optionally 35 km/h - 0-21 mph) 0-11 km/h (6 mph) |
| Oscillation: max. oscillation angle | +/-10° |

BRAKES

| | |
|--|---|
| Working brakes: | |
| 1. Hydraulically operated wet lamella brake in front and rear axle, acting on all 4 wheels | • |
| 2. Hydrostatic inching brake, acting on all 4 wheels | • |
| Parking brake: Spring-loaded wet lamella brake in rear axle, acting on all 4 wheels | • |

STEERING

| | |
|--|--------|
| Hydrostatic 4-wheel steering with automatic alignment (4 steering modes: 4-wheel, front wheel, crab and reduced crab steering) | • |
| Max. steering angle | +/-35° |

HYDRAULIC SYSTEM

| | |
|--|--|
| Dual-circuit system with gear pumps | |
| 1. Working hydraulics circuit (lift/lower, tilt, accessories), and steering (via priority valve); three-fold control valve with primary and secondary protection | • |
| Max. operating pressure at 2200 rpm | 112 l/min (29.6 gal/min) and 230 bar (3336 psi) |
| Max. oil flow for auxiliary hydraulics | 172 l/min (45.4 gal/min) |
| 2. Circuit (swivelling) single control valve with primary and secondary protection, high pressure bypass line to working hydraulics | • |
| Max. operating pressure at 2200 rpm | 60 l/min (15.9 gal/min) and 210 bar (3046 psi) |
| Servo-assisted hydraulic controls for 1 st circuit, joystick operated | |

PERFORMANCE DATA

| | |
|---|---------------------|
| Bucket position: | |
| - Tilting angle | 45° |
| - Dump angle, top | 45° |
| Lifting force | 106 kN (2,384 lbf) |
| Breakout force | 130 kN (2,922 lbf) |
| Thrust force | 112 kN (2,517 lbf) |
| Tipping load: Quick-coupler KAT V | |
| - Standard bucket, max. turned, straight | 8500 kg (18,739 lb) |
| - Standard bucket, max. turned, 90°-swivelled | 8500 kg (18,739 lb) |
| Payload: Quick-coupler KAT V | |
| - on forks, max. turned, frontal, even terrain | 5350 kg (11,794 lb) |
| - on forks, max. turned, max. swivelled, even terrain | 4690 kg (10,339 lb) |
| - on forks, max. turned, frontal, even terrain* | 6800 kg (14,991 lb) |

Tipping load according to ISO 14397; Payload according to EN 474-3

* Transport position 300 mm above ground

FILLING CAPACITIES

| | |
|----------------------------|--------------------------|
| Engine with filter | approx. 14 l (3.7 gal) |
| Fuel tank | approx. 250 l (66 gal) |
| Front axle total | approx. 25 l (6.6 gal) |
| Rear axle with gearbox | approx. 25 l (6.6 gal) |
| Hydraulic system with tank | approx. 230 l (60.8 gal) |
| Distributor gear | approx. 9.5 l (2.5 gal) |
| AdBlue®-tank | approx. 20 l (5.2 gal) |

NOTE: METRIC MEASUREMENTS ARE THE CRITICAL VALUES

- 1 Litre = 0.26417 US Liquid Gallons
- 1 Litre = 0.21997 Imperial Liquid Gallons

**AS210**

STANDARD / OPTIONAL EQUIPEMENT

STANDARD FEATURES

| | |
|--|---|
| Rigid chassis with rear axle support for maximum stability, especially while working in swivelled position | • |
| Unique 180° chain operated, end cushioned swing system without clearance and two swing cylinders for constant speed and torque | • |
| Z ^{PLUS} kinematics incl. precise parallel lifting and bucket position indicator | • |
| Electro-hydraulically operated quick coupler | • |
| Ride control | • |
| Tyres: 20.5 – 25 (Profile: EM-60) | • |
| 3-Speed ranges shiftable under load | • |
| Rear camera system | • |
| Four-wheel drive | • |
| Four-wheel and front-wheel steering | • |
| 100% differential lock in front and rear axles manually activated | • |
| Telematic system | • |
| Air conditioning | • |
| Headlights at front of cabin | • |
| Working lights on the boom | • |
| Working lights at rear of cabin | • |
| Tinted glass | • |
| Front and rear wipers and washers | • |
| Rear window heating | • |
| 2 large rear-view mirrors | • |
| Rear mirror in cabin | • |
| Intuitive modular control panel with speedometer | • |
| Lockable cabin door on left side | • |
| Sun blind | • |
| Cabin heating with 3 level fresh air ventilation | • |
| Adjustable steering-wheel | • |
| Adjustable driver's seat (adjusts to driver's weight) | • |
| Seat belt | • |
| Automatic activation of parking brake in neutral position | • |
| Interior light | • |
| Glovebox | • |
| Lashing rings | • |
| Towing hook | • |
| Colour: yellow / grey | • |

OPTIONAL EQUIPMENT

| | |
|---|---|
| 35 km/h (0-21 mph) version | • |
| Different tyre options | • |
| LED working lights | • |
| LED beacon light | • |
| Reverse warning system | • |
| FOPS protecting system | • |
| Bucket protection compliant to road-safety standards | • |
| Auxiliary hydraulics 2 nd circuit | • |
| Central lubrication system | • |
| Bio-degradable oil fill for hydraulic system | • |
| Radio incl. Bluetooth, USB, MP3, RDS | • |
| Lift delimiter | • |
| Pressureless return line | • |
| Leak-oil line | • |
| Safety valves for lift and tilt cylinders | • |
| Immobilizer | • |
| Towing device | • |
| Road safety kit | • |
| Air suspended driver seat, incl. seat heater | • |
| Fuel refuelling pump | • |
| Wide range of attachments like pallet fork, load hook, buckets etc. | • |

EMISSIONS

Emissions according to Stage V - EU-RL 97/68

| | |
|--|-----------|
| Noise emission: | |
| Sound power level LWA ¹ | |
| Acoustic power level LpA ² | 104 dB(A) |
| The exterior (1) and interior (2) noise levels correspond to the standards | 76 dB(A) |

Vibrations:

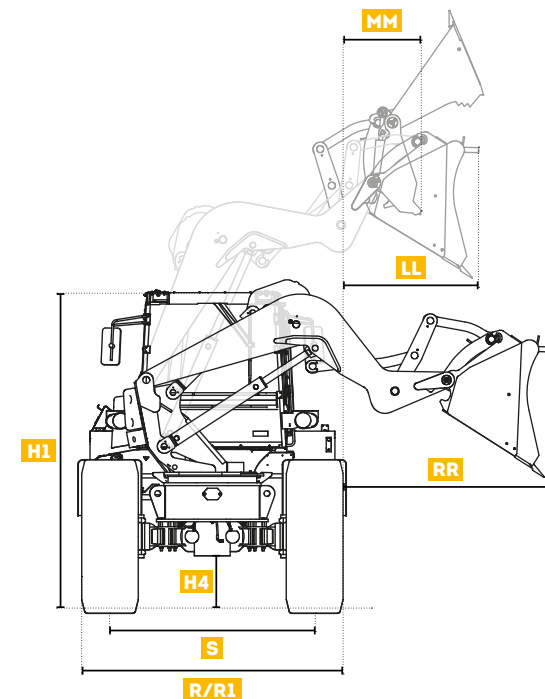
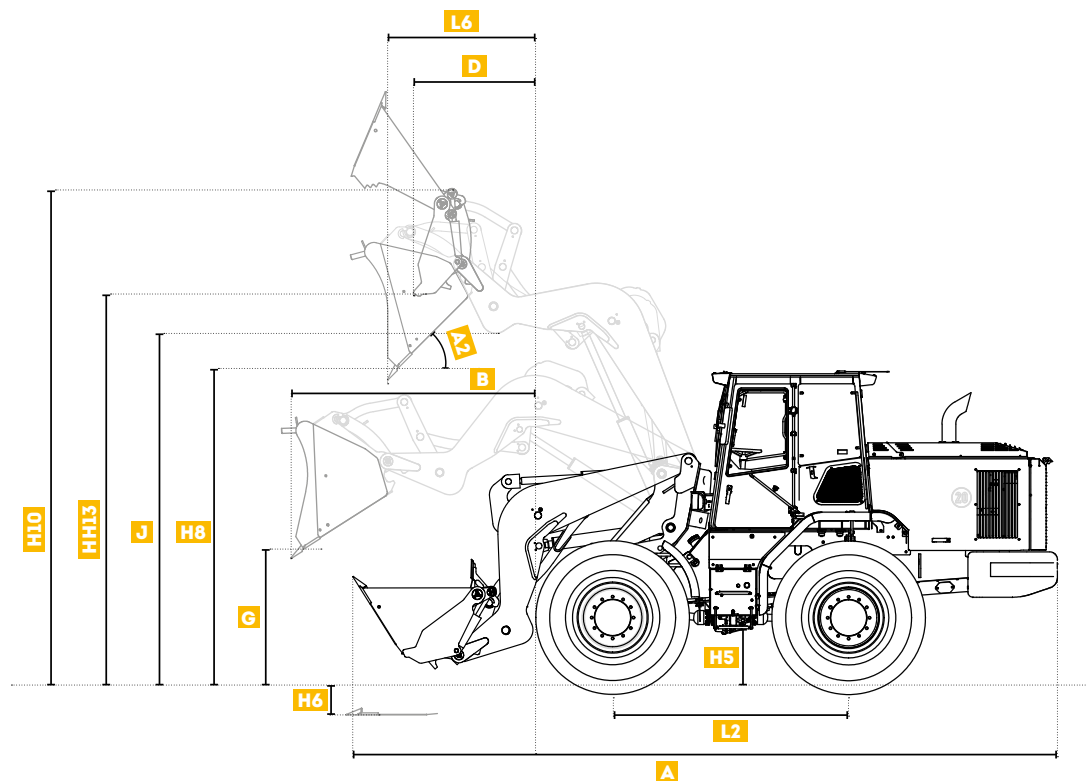
| | |
|--|-------------------------------|
| Vibration total value ³ | < 2.5 m (8'2")/s ² |
| Effective vibration level ⁴ | < 0.5 m (1'7")/s ² |

¹ According to 2000/14/EG² According to ISO 6396³ According to ISO/TR 25398⁴ According to ISO/TR 25398

All technical data refer to the standard machine with quick-coupler KAT V if not specified differently.

Standard and optional equipment may vary.
Consult your Mecalac dealer for details.

AS 210 **TECHNICAL DATA**

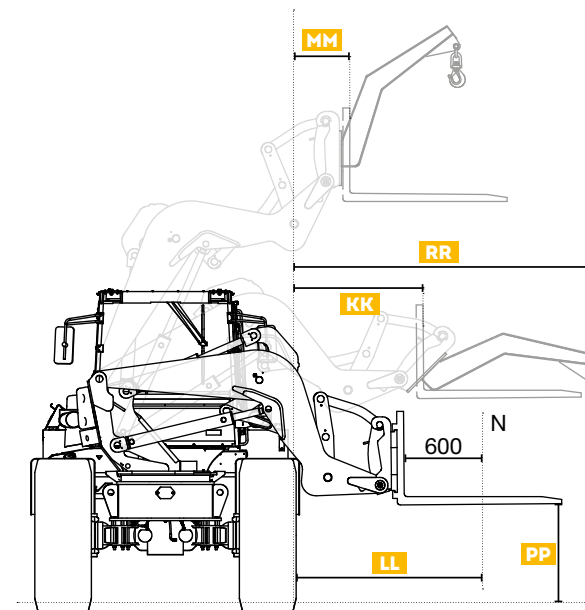
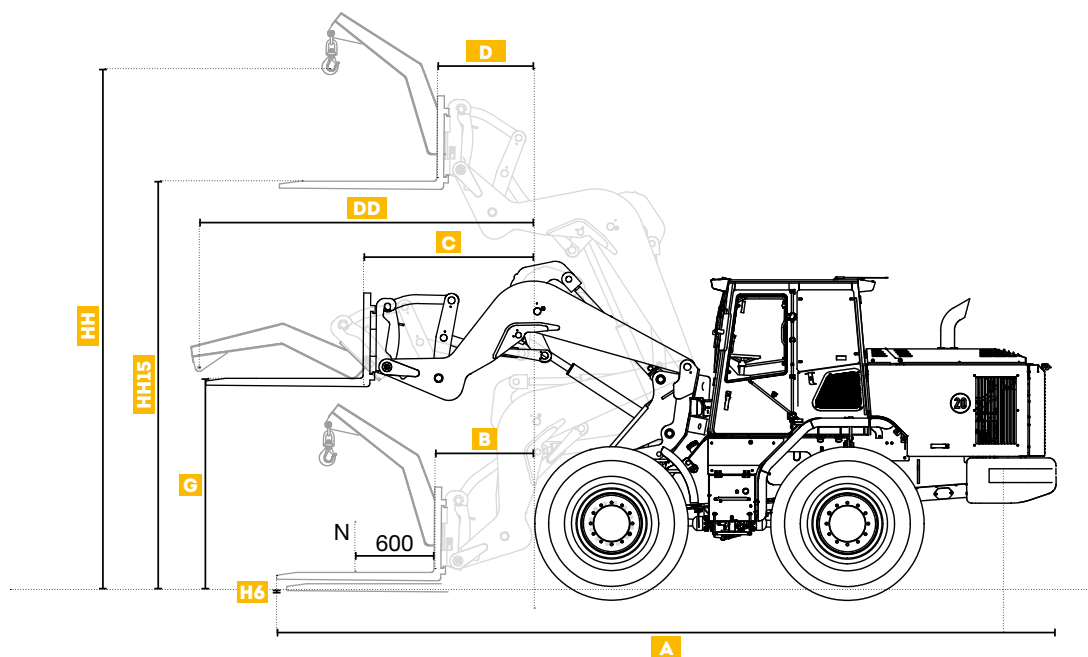


| MACHINE DIMENSIONS | | KAT V | |
|--------------------|---|---|--|
| BUCKET | | STD. 2.1 m ³ (2.75 yd ³) | 4x1 - 1.8 m ³ (2.35 yd ³) |
| A | Overall length | 7230 mm (23'8.6") | 7200 mm (23'7.5") |
| A2 | Tipping angle max. | 45° | 45° |
| B | Dumping width max. | 2150 mm (7'0") | 1960 mm (6'5.2") |
| D | Dumping width at max. lifting height and 45° tipping angle | - | 1340 mm (4'4.8") |
| G | Dumping height at max. width | 1220 mm (4'0") | 1135 mm (3'8.7") |
| H1 | Overall height | 3160 mm (10'4.4") | 3160 mm (10'4.4") |
| H4 | Ground clearance axles gear box | 500 mm (1'7.7") | 500 mm (1'7.7") |
| H5 | Ground clearance gear box | 500 mm (1'7.7") | 500 mm (1'7.7") |
| H6 | Plunge depth | 110 mm (0'4.3") | 320 mm (1'0.6") |
| H8 | Dumping height at max. lifting height and 45° tipping angle | 3230 mm (10'7.2") | 3250 mm (10'8") |
| H10 | Working height max. | 5350 mm (17'6.8") | 5355 mm (17'6.8") |

| MACHINE DIMENSIONS | | KAT V | |
|--------------------|--|---|--|
| BUCKET | | STD. 2.1 m ³ (2.75 yd ³) | 4x1 - 1.8 m ³ (2.35 yd ³) |
| HH13 | Dumping height at max. lifting height | - | 4300 mm (14'1.3") |
| J | Loading height | 3575 mm (11'8.7") | 3575 mm (11'8.7") |
| LL | Dumping width at max. lifting height and 45° tipping angle to the side | 980 mm (3'2.6") | 1055 mm (3'5.5") |
| L2 | Wheelbase | 2400 mm (7'10.5") | 2400 mm (7'10.5") |
| L6 | Dumping width at max. lifting height and 45° tipping angle | 1400 mm (4'7") | 1425 mm (4'8") |
| MM | Dumping width at max. lifting height to the side | - | 800 mm (2'7.5") |
| RR | Dumping width max. to the side | 1730 mm (5'8") | 1560 mm (5'1.4") |
| S | Wheel track | 2080 mm (6'9.9") | 2080 mm (6'9.9") |
| R | Width over bucket | 2700 mm (8'10") | 2700 mm (8'10") |
| R1 | Width over tyres | 2605 mm (8'6.6") | 2605 mm (8'6.6") |

All data based on standard tires. All data are non-binding. Changes are reserved without notice. The order confirmation is exclusively decisive

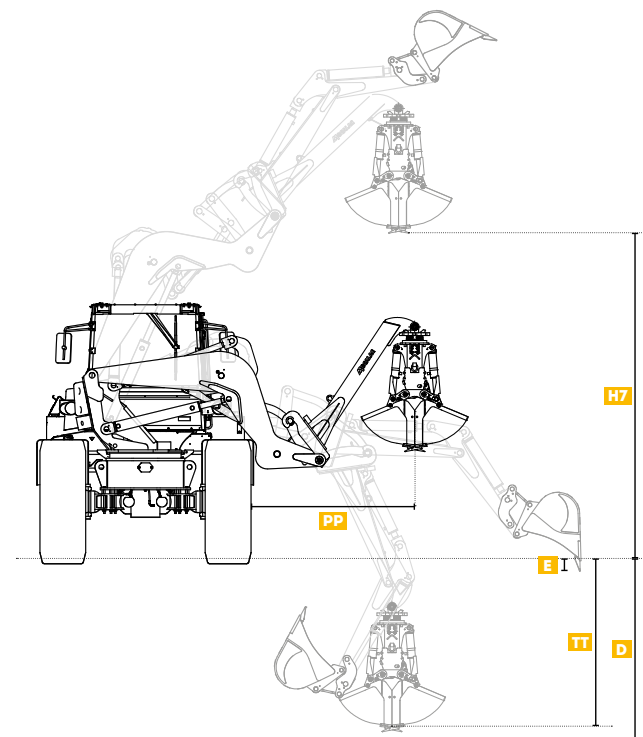
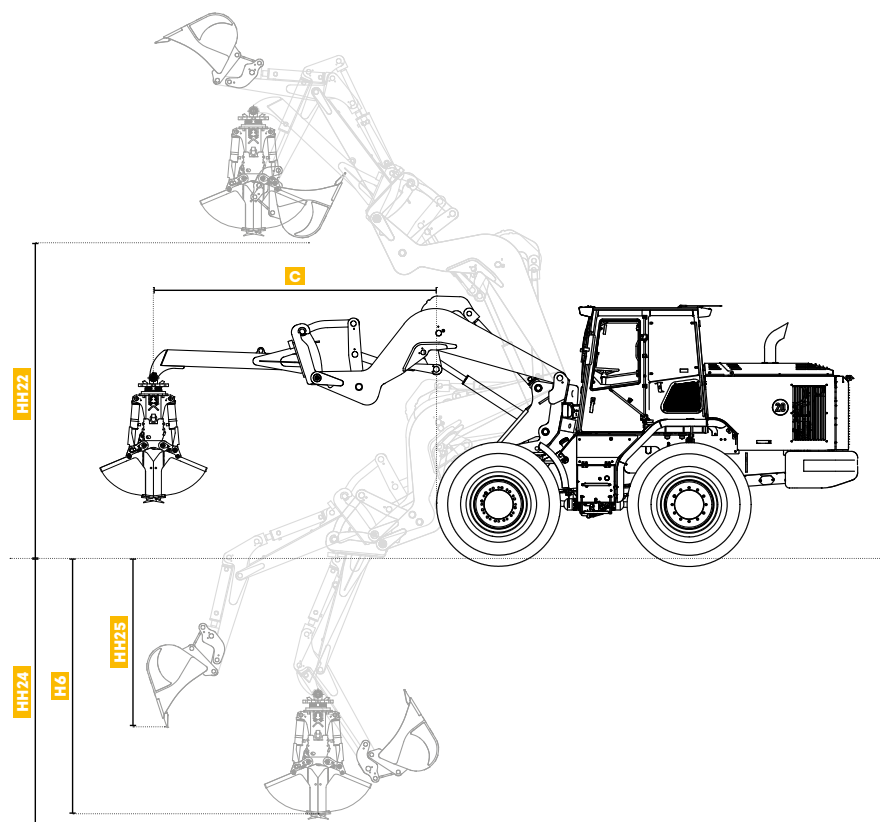
AS 210 **TECHNICAL DATA**



| MACHINE DIMENSIONS | | KAT V | |
|--------------------|---------------------------------------|------------------|-------------------|
| | | FORKS | LOAD HOOK |
| A | Overall length | 7900 mm (25'11") | 7300 mm (23'11") |
| AS | Tipping angle max. | 25° | - |
| B | Nominal reach with payload | 1020 mm (3'4.2") | - |
| C | Max. reach | 1740 mm (5'8.5") | - |
| D | Reach at max. lifting height | 990 mm (3'3") | - |
| DD | Loading reach max. | - | 3410 mm (11'2.3") |
| G | Loading height at max. reach | 2160 mm (7'1") | - |
| HH | Loading height at max. lifting height | - | 5310 mm (17'5") |

| MACHINE DIMENSIONS | | KAT V | |
|--------------------|--|-------------------|------------------|
| | | FORKS | LOAD HOOK |
| H6 | Loading height at min. lifting | 70 mm (0'2.8") | - |
| HH15 | Overload height at max. lifting height | 4100 mm (13'5.4") | - |
| KK | Max reach to the side | 1315 mm (4'3.8") | - |
| LL | Payload reach to the side at min. lifting height | 1720 mm (5'7.7") | - |
| MM | Reach to the side at max. lifting height | 570 mm (1'10") | - |
| PP | Min. height on the side | 1075 mm (3'6.3") | - |
| RR | Loading reach max. on the side | - | 2990 mm (9'9.7") |

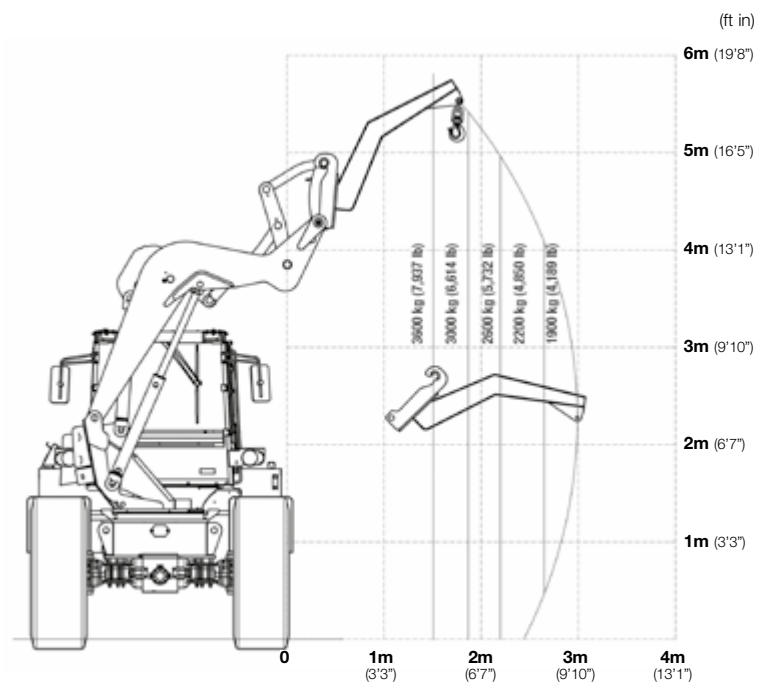
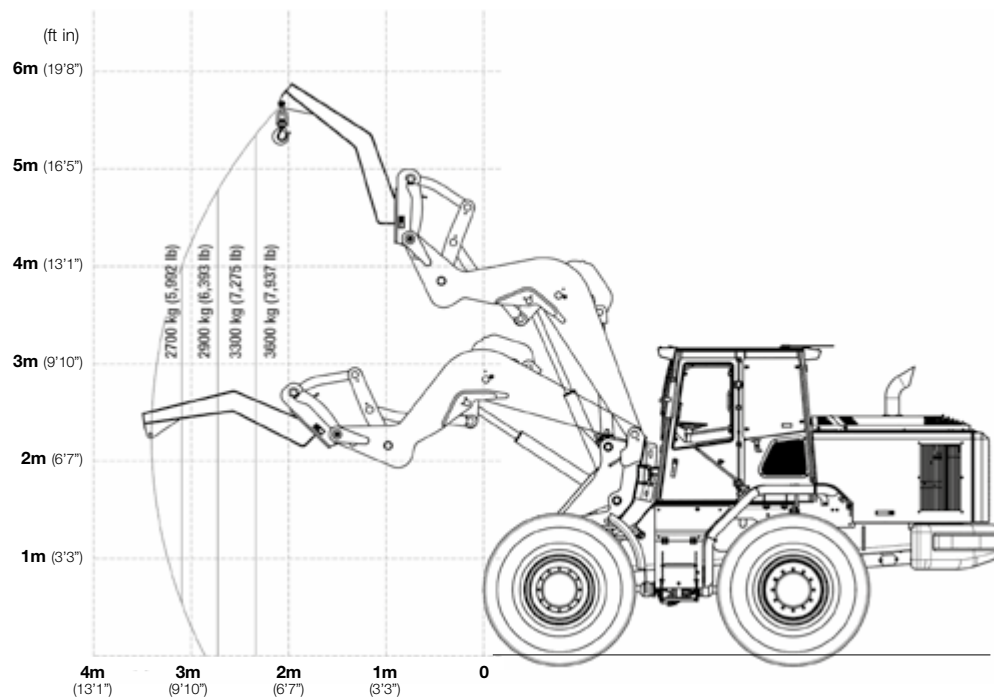
AS 210 **TECHNICAL DATA**

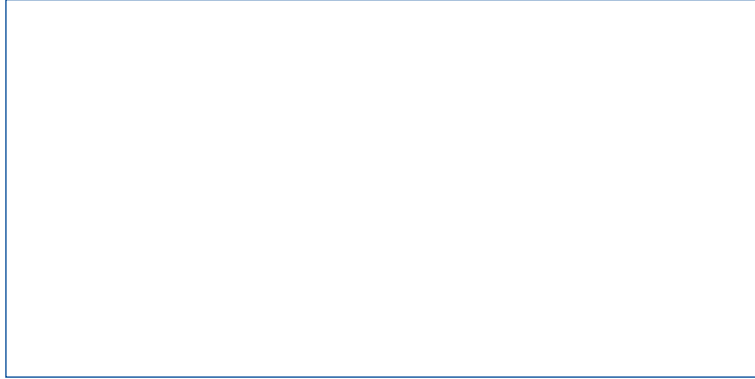


| MACHINE DIMENSIONS | | KAT V | |
|--------------------|--|------------------|-----------------|
| | | EXCAVATOR | GRAB |
| C | Max. reach of grab | - | 3560 mm (11'8") |
| D | Max. digging depth of excavator on the side | 2300 mm (7'7") | - |
| E | Vertical digging depth on the side | 100 mm (0'4") | - |
| H6 | Max. digging depth of grab | - | 3200 mm (10'6") |
| H7 | Overload height of grab at max. lifting height | - | 4100 mm (13'5") |
| HH22 | Overload height of excavator at max. lifting height | 3900 mm (12'9") | - |
| HH24 | Max. digging depth of excavator | 3350 mm (10'12") | - |
| HH25 | Vertical digging depth | 2000 mm (6'7") | - |
| PP | Max. reach of grab on the side | - | 3140 mm (10'4") |
| TT | Max. digging depth of grab at min. lifting on the side | - | 2150 mm (7') |

AS210 **TECHNICAL DATA**

LOAD CAPACITY CHARTS FOR LOAD HOOK ATTACHMENT





MECALAC FRANCE S.A.S.
2, avenue du Pré de Challes
Parc des Glaisins – CS 40230
Annecy-le-Vieux
FR - 74942 Annecy Cedex
Tel. +33 (0)4 50 64 01 63

**MECALAC BAUMASCHINEN
GMBH**
Am Friedrichsbrunnen
D-24782 Büdelsdorf
Tel. +49 (0)43 31/3 51-319

**MECALAC CONSTRUCTION
EQUIPMENT UK LTD**
Unit 1, Mallory Way
Gallagher Business Park
Coventry, CV6 6PB, UK
Tel. +44 (0)24 7633 9400

**MECALAC İŞ MAKİNELERİ
SAN. VE TİC. LTD. ŞTİ.**
Ege Serbest Bölgesi
Zafer SB Mahallesi Gündüz Sokak No:17/1
35410, Gazimür - İzmir - TÜRKİYE
Tel. +90 232 220 11 15



WWW.MECALAC.COM