

# HL955A

WHEEL LOADER



Engine Power  
149 kW (200 HP) at 2200 rpm

Bucket Capacity  
2.4 ~ 2.8 m<sup>3</sup>

Operating Weight  
15800 kg / 16490 kg



# READY TO CHANGE YOUR WORLD

# A SERIES / HL955A



The HL955A Wheel Loader is part of Hyundai's A-Series: a fresh generation of construction equipment that complies with the European stage V emission levels. But it does much more than that! While fulfilling regulatory demands, Hyundai aimed for a ground-breaking level of customer satisfaction with maximum performance and productivity, better safety, more convenience and improved uptime management.

Featuring impressive power matched with carefully selected technologies that help you to work more efficiently and economically, this rugged loader opens up a world of new possibilities.



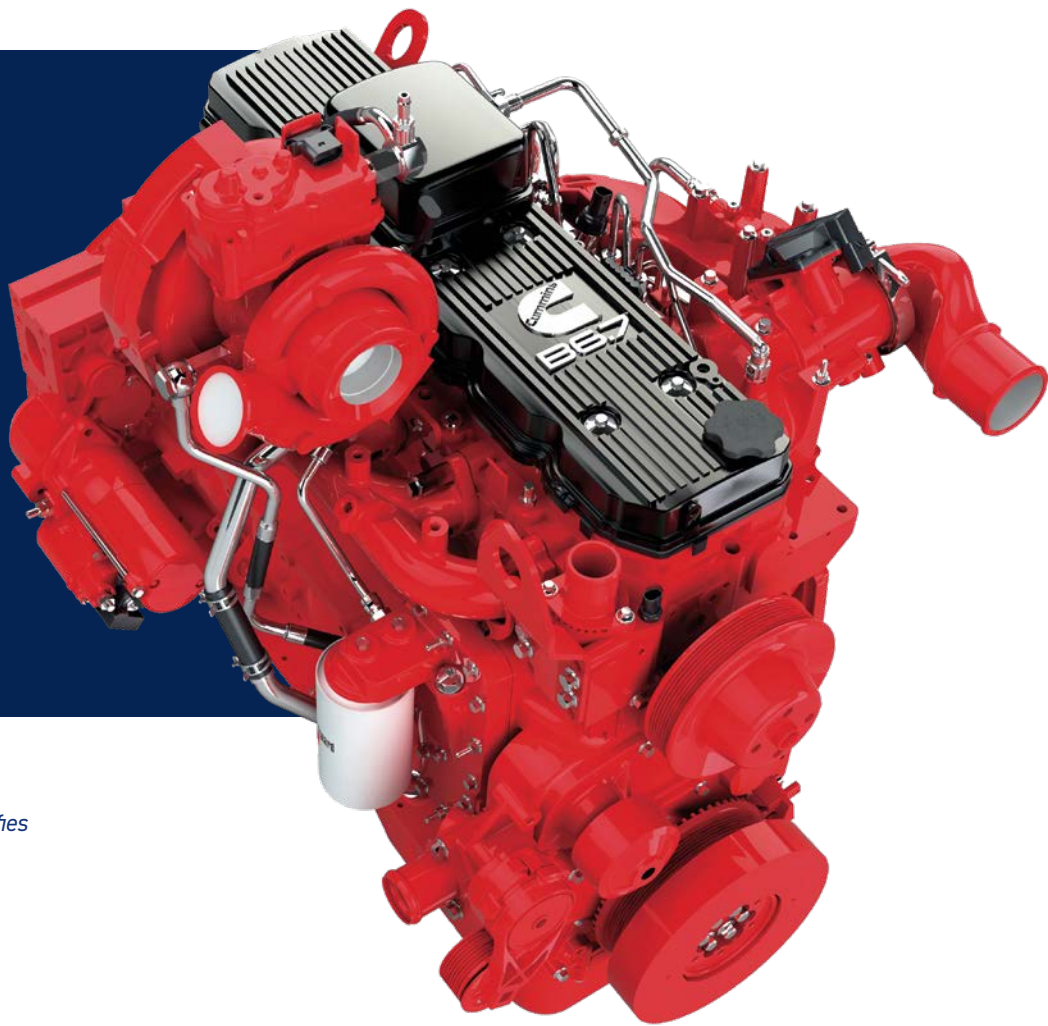
# TAILORED TECHNOLOGIES FOR BETTER PRODUCTIVITY

The HL955A is powered by a reliable Cummins B6.7 Stage V engine that easily handles heavy-duty work in extreme conditions. Its power is complemented by a range of technologies that enhance fuel efficiency while keeping harmful emissions to a minimum.

Precise operating systems help you to get the most out of this impressive machine, including optimised power matching for the ultimate balance of torque and RPM. When operated in Smart Power mode, the engine delivers fuel savings of up to 5% along with smooth performance in high-load work. Hyundai's proprietary weighing system technology is integrated as standard. Additional control, monitoring and maintenance features help you to optimise performance and productivity every single day, on any worksite.

## EU Stage V Certified Engine

Like all A-Series machines, the HL955A features our all-in-one exhaust aftertreatment system which cuts emissions and operating costs while enhancing reliability and simplifying maintenance.



*The Cummins B6.7 Stage V engine satisfies the strictest environmental emission regulation in the world including a 60% reduction in Particulate Matter (PM).*



*The HL955A's Z-bar linkage has been specially developed to provide the optimal balance between lifting power and tilt forces, combined with parallel lift.*

## The technology to improve efficiency

### ▶ Weighing system

The highly accurate automatic/manual cumulative weighing system helps you to manage production more efficiently in any environment. For maximum precision, weighing error icons and a two-colour weight value indicator are displayed on the monitor.

### ▶ Automatic engine shutdown

The engine shuts down automatically when the machine is at rest to cut fuel consumption and prevent unnecessary emissions. Different operating modes and idling times can be selected according to the work environment, further enhancing efficiency.



*Automatic engine shutdown*

### ▶ Smart Power mode

The new Smart Power mode adjusts engine RPM in heavy load work like digging to save fuel without compromising on performance. The technology also achieves an optimal balance between traction and breakout forces.



*Smart Power Mode*



*Weighing system*



# A CABIN DESIGNED AROUND YOU

The HL955A cabin was designed as a productive, stress-free working environment that fits every operator perfectly. Pleasant and spacious, it features state-of-the-art noise and vibration reduction technology, achieving a sound level of only 67 dB, one of the lowest in this machine category. The high-quality adjustable seat and armrest ensure comfortable reach to all controls. A range of technologies enable easier machine monitoring and keep you entertained during your working day.

## Technology for efficient operation

### Seat, armrest, control lever A

The HL955A has a large, fully adjustable seat and armrest designed to help operators work longer and more productively. For added comfort, an air suspension seat is available as an option.

### Eco Report

The Eco Report feature makes it easy for operators to develop efficient working habits by displaying real-time information about machine performance.

### ✔ Remote door control

The cabin door can optionally be opened remotely for added safety and convenience.



*Machine status cluster  
All the indicators displaying  
machine status are centralised  
in one cluster to enable easy,  
efficient control.*



OPTION



### ✔ Soft end stop

The soft end stop function reduces the hydraulic speed of the cylinder as it reaches the end of its stroke. This lessens the shock load of the stroke for increased operating comfort and better material retention.





# PROTECTION FOR YOU AND YOUR EQUIPMENT

Details can make a huge difference when it comes to safety, especially when you're working in rough conditions. It's not just a matter of complying with rules. The HL955A's safety features are designed and tested to meet your needs in the real world, even offering an extra pair of eyes with the optional Advanced-Around View Monitoring (AAVM), Intelligent Moving Object Detection (IMOD) and radar systems. Confidence is improved by technologies that provide a feeling of stability and smooth performance in high-load work. By helping to ensure a calm, accident-free worksite, this wheel loader adds to every operator's productivity and peace of mind.

## ▶ AAVM

The optional Advanced Around View Monitoring (AAVM) system gives you a 360° overview of your immediate working environment. It also includes Intelligent Moving Object Detection (IMOD) technology that senses and warns you when people or objects come within five metres of the machine.

## Radar system

The optional radar system detects obstacles behind the machine day and night, with no blind spots. The distance between the obstacle and the loader is displayed on the secondary monitor.

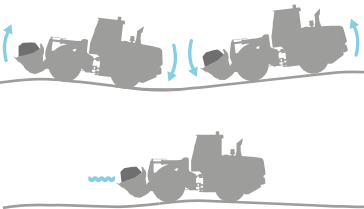


## Seat belt warning alarm

Operators are reminded to fasten their safety belt by an audible and visible alarm.

## Ride control system

A ride control system with a piston accumulator reduces pitching of the wheel loader body and bucket for more stable and comfortable operation. It also minimises spillover, adding to convenience and productivity.



## ▶ Foldable side mirror

The side mirror is easy to adjust for optimal visibility and can be folded away to prevent damage during transportation.





# MORE UPTIME FOR A RELIABLE RETURN ON YOUR INVESTMENT

To protect your business, you need to know that the investment you make today will sustain your profits over the long term. That's why we prioritised reliability throughout the development of the HL955A, from design and manufacturing to quality control. The axles, driveshaft and all operating systems have been revised and tested rigorously for endurance on a range of work sites. The result is a tough, durable workhorse that minimises downtime for repairs and maintenance and helps you to protect your profits.

## Quality components for maximum uptime

### Axles

The HL955A features premium quality axles with enhanced load capacity for better reliability and durability. A separate front axle oil cooling system is available as an option to prevent overheating during high-load work or tasks requiring frequent braking.

### ICCO

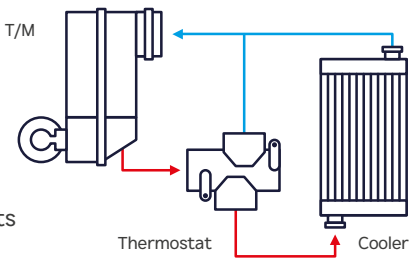
The Intelligent Clutch Cut-Off (ICCO) function minimises loss of power in the torque converter and prevents excessive power use during braking. This reduces heat generation and wear on the brake disc.

### Unified control valve

The hydraulic system has been simplified with a unified control valve system. This removes the need for hydraulic hoses connected to each valve, decreasing the number of possible leak points.

### Thermostat for transmission cooling

The optional thermostat for transmission cooling helps to warm up the fluid quickly and keeps it at the optimal working temperature, protecting components and increasing efficiency.



### Hydraulic differential lock

A hydraulic locking differential prevents tyre slip for more secure operation as well as better productivity and fuel economy.



### Hoses

High-grade hoses with outstanding resistance to heat and pressure provide maximum durability, even in rough working conditions.





# EASY SERVICING FOR TROUBLE-FREE OWNERSHIP

The peace of mind that comes with quick, low-effort servicing is part of what we call the Hyundai Effect. The HL955A is designed to make maintenance as convenient as possible. The engine hood opens wide to provide easy access for cleaning and routine tasks. All components and materials have been optimised to ensure a long, trouble-free life. Hyundai's Hi-MATE remote management system is integrated to provide the highest level of service and support. The HL955A also features our new Engine Connected Diagnostics (ECD) system which immediately reports any engine failure to both Hi-MATE and the engine manufacturer to ensure the fastest, easiest resolution.



### Air conditioning filter

The 2-stage cabin air filter is easy to replace and is made from a specially selected material for superior performance.



### Radiator

The HL955A has a dependable wide-fin air cooler that prevents performance degradation caused by contamination. It is also equipped with a reversible fan to eliminate dust and debris.



### Auto greasing system

With the optional auto greasing system, grease is applied to lubrication points automatically when needed. The correct dosing is ensured and lubricant is applied uniformly, reducing grease consumption and eliminating waste.



### Engine hood

The tilt-back engine hood is fully retractable and can be opened electrically for easy access to the sealed engine room and cooling room. The engine room is designed to prevent the possibility of fire caused by the inflow of foreign materials.

## HiMATE

It's convenient, easy and valuable. Hi MATE, Hyundai's remote management system, utilises GPS-satellite technology to provide customers with the highest level of service and product support available.

### Increase productivity

By providing information such as service hours, idle time and fuel consumption, Hi MATE saves you money and improves productivity. Service alerts enable better maintenance planning.

### Monitor your machines

Hi MATE's real-time location information allows convenient monitoring of your equipment via the Hi MATE website or mobile app.

### Improve Security

Protect your equipment from theft or unauthorised usage. Hi MATE's geofencing alerts notify you automatically when a machine leaves a predetermined zone.

### ECD (Engine Connected Diagnostics)

ECD provides troubleshooting information as well as tailored servicing. Service technicians are supported with remote diagnostics allowing them to achieve quick resolution rate.

### Mobile fleet app

Our Mobile Fleet app provides all the information you need to run your fleet efficiently and economically.



HCE-DT Air allows service technicians to connect to your equipment wirelessly via smartphone and laptop right on site.

## Keeping you covered

Hyundai genuine parts and accessories are designed to keep your machine running at optimum performance, providing increased uptime, comfort and productivity. Our 13000m<sup>2</sup> European Parts Warehouse guarantees 24-hour

delivery across our dealer network. Hyundai Standard and Extended Warranty Programmes are also available, providing peace of mind and giving you full control over your operating costs.





# TAKE THE TOUR!

**A**  
**SERIES / HL955A**



## Durability

- Unified control valve
- Enhanced axle capacity
- Premium quality axles
- Axle cooling **OPTION**
- Thermostat-based transmission cooling
- Completely sealed engine room
- High grade hoses

## Productivity & Efficiency

- Load sensing hydraulic system
- Accurate weighing system
- Eco pedal **OPTION**
- Eco Report
- Smart Power mode
- Hydraulic differential lock
- 5-speed transmission with lock-up clutch **OPTION**
- Intelligent clutch cut-off (ICCO)
- Automatic engine shutdown

## Comfort

- Spacious soundproofed cabin
- Wide touchscreen monitor
- Ride control system
- Fully adjustable seat and armrest
- Remote door control **OPTION**
- Soft end stop

## Serviceability

- ECD (Engine Connected Diagnostics)
- Fully openable engine hood
- Hi-MATE telematic system
- Auto greasing system **OPTION**
- Wide core & fin radiator
- Auto reversible fan

## Safety

- AAVM camera system **OPTION**
- IMOD **OPTION** (Intelligent Moving Object Detection)
- Radar rear detection **OPTION**
- Foldable side mirror
- Seat belt warning alarm



HL955A HD

OPTIMISED FOR  
CONTINUOUS  
HEAVY-DUTY WORK

The HL955A also comes in a heavy-duty version – the HL955A HD – to add even more value for our customers who are engaged in high-load work in tough conditions. This rugged workhorse is enhanced with robust components and protection wherever possible to ensure the ultimate reliability and durability.

Toughness built in

Under-guards

Under-guards are bolted to the frame to protect the main components from contact with objects and prevent material from entering the engine, transmission or MCV environment.



Rear grill guard **A**

An optional rear grill guard protects the engine hood, rear view camera, work lights and radiators from contact with any obstacles. The design does not impede the operator's view. The steel guard is hinged and opens to allow easy access to the radiator for cleaning or daily maintenance.



Axles

The axles of the HL955A HD are designed for uncompromising reliability during continuous heavy-duty work. The HD front axle of the HL955A HD has a higher capacity compared to the HL955A. Despite its great stability and power transmission capacity, the wheel loader axle has a compact design and low weight. The use of wet multi-disc brakes reduces braking losses and thus improves efficiency.

Advantages

- Long service life, robust design, and maximum operating smoothness
- Ensures high efficiency by preventing braking losses and optimising oil flow
- Easy servicing and low-wear brakes
- Excellent ground clearance due to compact design



Steel grill housing

Optional steel grill housing protects the front and rear working lights from material spill from the bucket.



Cabin guards **B**

Cabin guards provide an optional protection to the front and rear windows from damage when working in tough conditions, while also allowing an unobstructed view of the work environment. The front guard is hinged and opens easily for cleaning of the windshield.

Steel plates

A steel plate covers the bucket cylinder rod to protect it from falling debris or material spill from the bucket. The plate is mounted to the cylinder and independent from cylinder movements. Strong steel plates are also mounted on both sides of the front frame. These prevent damage to the hydraulic hoses caused by sharp materials when working in recycling or demolition applications.



HL955A TM

ADDED FLEXIBILITY  
TO TACKLE EVERY  
CHALLENGE

The HL955A also comes in a dedicated Tool Master (TM) version providing exact parallel lifting, high breakout power in the upper mast range and quick changing between multiple attachments via an optional ISO-type or Hyundai-standard-type quick coupler. Its high versatility makes the HL955A TM ideal for customers working in agriculture, recycling, waste handling, forestry or industrial applications.

*The HL955ATM adds versatility with precise parallel lifting, high breakout power and the capacity to work with numerous different attachments.*



Parallel linkage

The HL955A TM features a parallel linkage system offering precise parallel lift and high breakout force in the upper lift arm position. Suitable for heavy attachments, the system allows the attachment to remain level throughout the lift cycle. This configuration, using 2 tilt cylinders, also gives the operator better visibility down the centre of the lift arms, enhancing precision and productivity.



Implement carrier

The implement carrier is extremely robust and compatible with a wide range of attachment types. All the components are engineered for durability and low maintenance. Safety is enhanced by optical and acoustic alarms. The attachment locking status is clearly indicated on both the display and the loader unit.

Standard or ISO type quick coupler

The HL955A TM can be provided with either a Hyundai standard or an ISO type quick coupler. The quick coupler offers the capacity to work with numerous different attachment types. This is particularly useful in applications requiring frequent changes from one attachment to another. An extra third (auxiliary) hydraulic circuit is included to supply hydraulic oil to attachments like a high-tip-bucket or sweeper.





HL955A XT / HL955A HDXT

TWO DIFFERENT BOOM LENGTHS

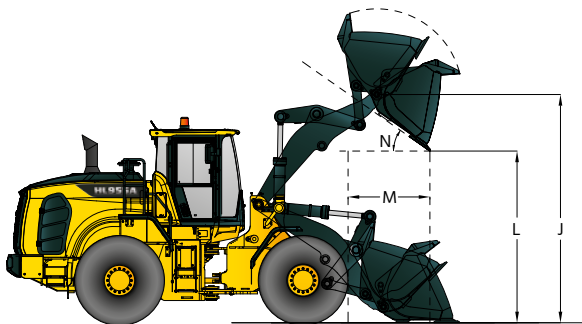
The HL955A / HL955A HD can be equipped with a standard boom (HL955A / HL955A HD) or a high-lift boom (HL955A XT / HL955A HDXT) to suit all requirements.

- Get an impressive bucket pivot point of over 3.94 m (standard boom) or 4.52 m (XT boom).
- With bucket pivot point heights of up to 4.52 m you'll quickly and easily load trucks, loading wagons and hoppers with high loading sills.
- Fully articulated, you can handle up to 4.93 tonnes (standard boom) or 4.08 tonnes (XT boom) of material.
- The high-lift boom enables you to work with an earthmoving bucket to a maximum dump clearance at 45° discharge of 3.36 m.
- Robust, low-maintenance Z-bar linkage offers high breakout forces at loading conditions.



With Z-bar linkage and high lift boom.

- J Hinge pin height at maximum lift (HL955A XT: 4790 mm)
- L Dump clearance at maximum lift and 45° discharge (HL955A XT: 3485 mm)
- M Reach at maximum lift and 45° discharge (HL955A XT: 1420 mm)
- N Dump angle at maximum lift and dump on stops (HL955A XT: 48 °)



SPECIFICATIONS

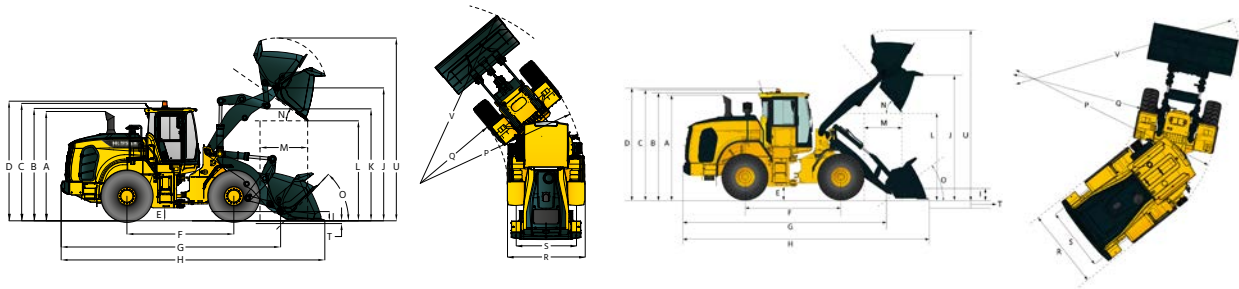
SPECIFICATIONS		HL955A / HL955A XT / HL955A TM / HL955A HD / HL955A HDXT	
ENGINE			
Maker / Model		CUMMINS B 6.7 / EU Stage V	
Type		6 cylinder, Watercooled, 4-cycle, turbocharged charge aircooled, direct injection, electronic controlled diesel engine	
Aftertreatment System		DOC, DPF, SCR, VGT	
Gross Power (SAE J1995)		200 HP (149 kW) at 2200 rpm	
Net Power (SAE J1349)		197 HP (147 kW) at 2200 rpm	
Max. Power		210 HP (157 kW) at 1900 rpm	
Peak Gross Torque (SAE J1995)		990 N-m (730 lb.ft) at 1300 rpm	
Displacement		6.7 ℓ	
No. of Cylinders		6	
Bore x Stroke		107 mm x 124 mm	
Compression Ratio		173 : 1	
Air Cleaner		Dry, Two stage dual elements	
Alternator		24 V - 95 Amp	
Battery		2 x 12V, 900 CCA	
Starting Motor		24 V - 5.5 kw	
- The indicated net power is available for the flywheel when the engine is equipped with a fan, alternator, air cleaner, and after-treatment device. - The indicated gross power is obtained with the fan at maximum speed.			
TRANSMISSION			
Manufacturer / model:		ZF / 4WG190	ZF / 5WG210 (option)
Torque converter type*		3-Elements, Single-stage, Single phase	
Travel speed		4 speed T/M	5 Speed T/M with lock up clutch
		km/h	km/h
Forward	1st	71	6.5
	2nd	11.7	11.4
	3rd	23.6	17.6
	4th	39.2	27.3
	5th	-	40.0
Reverse	1st	7.4	6.9
	2nd	12.3	12.0
	3rd	24.9	28.8
* Full automatic power shift, countershaft type with soft-shift in range and direction. Properly matched torque converter to engine and transmission for excellent working ability			
AXLES			
		HL955A (XT) / HL955A TM	HL955AHD (XT)
Hub reduction		Planetary reduction at wheel end	
Reduction ratio		23.334	
Front axle			
Manufacturer / model		ZF / MT-L3085II	ZF / MT-L3095II
Differential		Auto diff lock 100% lock ratio	
		Limited slip 30% lock ratio (option)	
		Conventional 0% lock ratio (option)	
Oscillating		±11 degrees	
Gradeability		30°	
Rear axle			
Manufacturer / model		ZF / MT-L3085II	ZF / MT-L3085II
Differential		Conventional 0% lock ratio	
		Limited slip 30% lock ratio (option)	
Oscillating		±11 degrees	
Gradeability		30°	
TYRES			
Type		Tubeless, loader design tyres	
Standard		20.5 R25, ★★, L3	
Options include		20.5 R25, ★, XHA	
OVERVIEW			
Description		HL955A (HD)	HL955A TM
Operating Weight		15800 kg	16500 kg
Bucket Capacity	Heaped	2.8 m³	2.7 m³
	Struck	2.4 m³	2.3 m³
Breakout Force-Bucket		14370 kg	12820 kg
Tipping Load	Straight	11350 kg	11000 kg
	Full Turn	9850 kg	9550 kg

SPECIFICATIONS		HL955A / HL955A XT / HL955A TM / HL955A HD / HL955A HDXT	
BRAKES			
Service Brakes		Hydraulically actuated, wet disc brakes actuate all 4 wheels, independent axle-by-axle system. Self adjusting & wheel speed brake.	
Parking Brake		Spring-applied, hydraulically released brake	
Emergency Brake		When brake oil pressure drops, indicator light alerts operator and parking brake automatically applies.	
HYDRAULIC SYSTEM			
Manufacturer Pump / MCV		Bosch Rexroth	
Type		Load sensing hydraulic system	
Maximum Pump Output		220 ℓ/min at 2200 rpm	
Maximum Operating Pressure		280 bar (3,980 psi)	
Main Control Valve	HL955A (HD)/ HL955A XT (HDXT)		HL955A TM
	2 Spool (boom, bucket)		3 Spool (boom, bucket, aux)
	3 Spool (boom, bucket, aux) (option)		
Lift Circuit	The valve has four functions: Raise / hold / lower / float Adjustable automatic kickout from horizontal to full lift and loading position.		
Tilt Circuit	The valve has three functions: Tilt back / hold / dump Adjustable automatic bucket positioner to desired load angle.		
Hydraulic Cycle Time with Rated Payload	Raise from Carry Position: 5.5 Sec.		Raise from Carry Position: 5.5 Sec.
	Dump, at maximum raise: 1.8 Sec.		Dump, at maximum raise: 2.5 Sec.
	Lower, empty, float down: 3.9 Sec.		Lower, empty, float down: 3.9 Sec.
	Total: 11.2 Sec.		Total: 11.9 Sec.
Cylinder	Type: double acting		
	No. of cylinders-bore x stroke		
	Lift: 2-125 x 745 mm		Lift: 2-125 x 745 mm
	Std lift frame tilt: 1-140 x 560 mm		Std lift frame tilt: 2-110 x 755 mm
	XT lift frame tilt: 1-140 x 585 mm		-
STEERING SYSTEM			
Type		Load sensing hydrostatic articulated steering	
Pump		Variable displacement piston pump	
System pressure		210 bar (3,046 psi)	
Cylinder		Double acting: 2 - 70 mm x 418 mm	
Steering angle		40° to both right and left angle, respectively	
Features		Center-point frame articulation. Tilt and telescopic steering column	
* Hyundai Bio Hydraulic Oil (HBHO) available			
SERVICE REFILL CAPACITIES			
UNIT		L	
Fuel tank		230	
DEF tank		37	
Cooling system		42	
Crankcase		18	
Transmission		33	
Front axle		32	
Rear axle		32	
Hydraulic tank		110	
Hydraulic system (Including tank)		200	
CABIN			
ROPS / FOPS Cabin Meet ISO 3471 and ISO 3449			
SOUND			
Guaranteed noise level presented below can be differed depending on a range of factors such as operating condition, speed of a cooling fan, types of engine and so forth. Hearing protection shall be necessary if an operator is working in the improperly maintained cabin or exposed to a noisy environment by leaving doors and/or windows open.			
With cooling fan speed at maximum value:			
Operator Sound Pressure Level (ISO 6396:2008)			67 dB(A)
Exterior Sound Power Level (ISO 6395:2008)			103 dB(A)
* Distance of 15 m, moving forward in second gear ratio			
AIR CONDITIONING SYSTEM			
The air conditioning system contains fluorinated greenhouse gas refrigerant R134a (Global Warming Potential = 1430). The system contains 0.75 kg of refrigerant respresenting a CO <sub>2</sub> equivalent of 1.07 metric tonnes.			



# DIMENSIONS

## DIMENSIONS



Unit: mm

Description	HL955A (HD)	HL955A XT (HDXT)	HL955A TM
A Height to Top of Exhaust Pipe	3320	3320	3320
B Height to Top of Cabin	3390	3390	3390
C Height to Top of Product Link Antenna	3440	3440	3440
D Height to Top of Warning Beacon	3520	3520	3520
E Ground Clearance	410	410	410
F Wheelbase	3050	3050	3050
G Overall Length (Without Bucket)	6430	7025	6530
H Shipping Length (With Bucket Level on Ground)	7715	8310	7820
I Hinge Pin Height at Carry Position	440	610	455
J Hinge Pin Height at Maximum Lift	3940	4515	4020
K Lift Arm Clearance at Maximum Lift	3340	3905	3160
L Dump Clearance at Maximum Lift and 45° Discharge	2785	3360	2850
M Reach at Maximum Lift and 45° Discharge	1180	1220	1360
N Dump Angle at Maximum Lift and Dump (on Stops)	48	48	50
O Roll Back Angle	Ground	41	50
	Carry	46	54
P Clearance Circle (Diameter) to Outside of Tyres	11140	11140	11140
Q Clearance Circle (Diameter) to Inside of Tyres	5980	5980	5980
R Width Over Tyres (Unloaded)	2530	2530	2530
S Tread Width	2010	2010	2010

## OPERATING SPECIFICATIONS WITH BUCKETS

		HL955A (HD) / HL955A XT (HDXT)				HL955A TM	
Linkage Bucket Type		PZ linkage STD lift, general purpose			PZ linkage XT high lift, general purpose	Tool Master, parallel linkage, general purpose	
Mounting		Pin on	Pin on	Hook on, QC ISO type	XT linkage changes	Hook on, QC ISO type	Hook on, QC ISO type
GET type		Bolt-on cutting edge	Bolt-on 2 piece tooth & segments	Bolt-on cutting edge		Bolt-on cutting edge	Bolt-on cutting edge
Sales code		LLB01	LLB41	LLB09		LLB91	LLB09
Bucket weight (empty)	kg	1135	1295	1205	-	1145	1205
Capacity - rated	m <sup>3</sup>	2.8	2.8	2.8	-	2.7	2.8
Capacity - rated at 110% fill factor	m <sup>3</sup>	3.1	3.1	3.1	-	3.0	3.1
Width	mm	2740	2810	2740	-	2740	2740
Dump clearance at maximum lift and 45° discharge	mm	2785	2660	2600	+575	2850	2670
Reach at maximum lift and 45° discharge	mm	1180	1275	1355	+40	1360	1535
Digging depth	mm	85	85	85	+35	105	105
Shipping length (with bucket)	mm	7715	7870	7970	+595	7820	8070
Overall height with bucket at maximum lift	mm	5330	5330	5515	+575	4820	5700
Loader clearance circle with bucket at carry position	mm	12550	12720	12700	+600	12540	12670
Static tipping load, straight (no tyre deflection)	kg	11350	11300	10200	-1950	11000	10300
Static tipping load, articulated (no tyre deflection)	kg	9850	9800	8850	-1700	9550	8950
Breakout-force	kg	14370	14370	11980	+170	12820	10700
Operating weight*	kg	15800	15855	16175	+690	16500	16660

\* All height and tyre related dimensions are with standard 20.5 R25, L3 tyres

# DENSITY AND BUCKET SELECTION

## DENSITY OF OPERATING MATERIALS

Loose Material		Material Density [ton / m <sup>3</sup> ]	Possible fill factor [%]*
Earth / Clay		1.5 ~ 1.7	~110
Sand and Gravel		1.5 ~ 1.7	~105
Aggregate	25 ~ 76 mm	1.6 ~ 1.7	~100
	19 mm and larger	1.8	~100

\*as a percentage of the rated capacity  
The bucket size must be chosen based on the density of the material and the expected fill factor.  
For optimum stability always consult the bucket selection chart.

## HL955A (HD) BUCKET SELECTION CHART

Standard Lift Arm - General Purpose Bucket																			
Type	m <sup>3</sup>	Material Density [ton / m <sup>3</sup> ]																	
		0.8	0.9	1.0	1.1	1.2	1.3	1.4	1.5	1.6	1.7	1.8	1.9	2.0	2.1	2.2	2.3	2.4	
Cutting edge	2.8	3.2 m <sup>3</sup>																	2.7 m <sup>3</sup>
2-Bolt on Tooth & Segment Edge	2.8	3.2 m <sup>3</sup>																	2.7 m <sup>3</sup>
Cutting Edge Q/C	2.8	3.2 m <sup>3</sup>																	2.7 m <sup>3</sup>

## HL955A XT (HDXT) BUCKET SELECTION CHART

High lift arm (XT) - General Purpose Bucket																			
Type	m <sup>3</sup>	Material Density [ton / m <sup>3</sup> ]																	
		0.8	0.9	1.0	1.1	1.2	1.3	1.4	1.5	1.6	1.7	1.8	1.9	2.0	2.1	2.2	2.3	2.4	
Cutting edge	2.8	3.2 m <sup>3</sup>																	2.7 m <sup>3</sup>
2-Bolt on Tooth & Segment Edge	2.8	3.2 m <sup>3</sup>																	2.7 m <sup>3</sup>
Cutting Edge Q/C	2.8	3.2 m <sup>3</sup>																	2.7 m <sup>3</sup>

## HL955A TM BUCKET SELECTION CHART

Parallel lift arm - General purpose bucket																			
Type	m <sup>3</sup>	Material Density [ton / m <sup>3</sup> ]																	
		0.8	0.9	1.0	1.1	1.2	1.3	1.4	1.5	1.6	1.7	1.8	1.9	2.0	2.1	2.2	2.3	2.4	
2-Bolt on Tooth & Segment Edge	2.7	3.1 m <sup>3</sup>																	2.6 m <sup>3</sup>
Cutting Edge Q/C	2.8	3.2 m <sup>3</sup>																	2.7 m <sup>3</sup>



## CHANGE IN OPERATING SPECIFICATIONS - TYRES

Tyres		20.5 R25 ★ XHA
Operating Weight	kg	-52
Static Tipping Load, Straight (No Tyre Deflection)	kg	-35 (-30)
Static Tipping Load, Articulated (No Tyre Deflection)	kg	-30 (-25)
Vertical Height Changes	mm	-7
R. Width Over Tyres (Unloaded)	mm	-6
P. Clearance Circle (Diameter) to Outside of Tyres	mm	-6
Q. Clearance Circle (Diameter) to Inside of Tyres	mm	+6

Dimension Changes Compared to 20.5R25, ★ ★, L3 tires. ( ) : XT SPEC

## CHANGE IN OPERATING SPECIFICATIONS - COUNTERWEIGHT

Counterweight		LCW12
Operating weight	kg	+300
Static tipping load, straight (no tyre deflection)	kg	+640
Static tipping load, articulated (no tyre deflection)	kg	+555
G. Overall length (without bucket)	mm	+0
H. Shipping length (with bucket level on ground)	mm	+6

Dimension Changes HL955A (HD) with heavy counterweight option compared to std counterweight



STANDARD/OPTIONAL EQUIPMENT

CABIN & INTERIOR	HL955A	HL955A XT	HL955A HD	HL955A HDXT	HL955A TM
<b>ALARMS, AUDIBLE AND VISUAL</b>					
Emergency warning	●	●	●	●	●
Engine coolant temperature	●	●	●	●	●
Transmission oil temperature	●	●	●	●	●
Hydraulic oil temperature	●	●	●	●	●
Fuel level	●	●	●	●	●
Transmission error	●	●	●	●	●
Air filter clogging	●	●	●	●	●
Engine oil pressure	●	●	●	●	●
Steering oil pressure	●	●	●	●	●
Battery charging	●	●	●	●	●
Brake oil pressure	●	●	●	●	●
Engine check	●	●	●	●	●
Engine Stop	●	●	●	●	●
Engine coolant level	●	●	●	●	●
Water in fuel	●	●	●	●	●
Exhaust system cleaning	●	●	●	●	●
Exhaust system cleaning inhibit	●	●	●	●	●
High exhaust system temperature	●	●	●	●	●
DEF level	●	●	●	●	●
SCR system fault	●	●	●	●	●
Seat belt fastened	●	●	●	●	●
<b>GAUGES</b>					
Engine coolant temperature	●	●	●	●	●
Fuel level	●	●	●	●	●
Speedometer	●	●	●	●	●
Transmission oil temperature	●	●	●	●	●
<b>INDICATOR LIGHTS</b>					
High beam	●	●	●	●	●
Parking brake	●	●	●	●	●
FNR	●	●	●	●	●
Joystick steering pilot lamp	○	○	○	○	○
Differential lock	●	●	●	●	●
Pilot cut-off	●	●	●	●	●
Turn signal	●	●	●	●	●
Warning up	●	●	●	●	●
Preheating	●	●	●	●	●
Engine auto stop	●	●	●	●	●
Clutch cut off	●	●	●	●	●
Float mode	●	●	●	●	●
Ride control	●	●	●	●	●
Fan reverse indicator	●	●	●	●	●
Torque convertor lock up	○	○	○	○	○
Fuel warmer	●	●	●	●	●
<b>LCD DISPLAY</b>					
Clock and fault code	●	●	●	●	●
Operating hour counter	●	●	●	●	●
DEF level	●	●	●	●	●
Engine rpm	●	●	●	●	●
Transmission gear range indicator	●	●	●	●	●
Job time and distance counter	●	●	●	●	●
Temperature (coolant, hydraulic oil, T/M oil)	●	●	●	●	●
<b>LIGHTING SYSTEM</b>					
LED interior light	●	●	●	●	●
2 stop and tail lights	●	●	●	●	●
2 stop and tail lights (LED)	○	○	○	○	○
4 turn signals	●	●	●	●	●
2 head lights on front frame	●	●	●	●	●
2 head lights on front frame (LED)	○	○	○	○	○
2 working lights on front roof	●	●	●	●	●
4 working lights on front roof, 2 working lights on rear roof	○	○	○	○	○
4 working lights on front roof, 2 working lights on rear roof (LED)	○	○	○	○	○
2 working lights on rear grill	●	●	●	●	●
2 working lights on rear grill (LED)	○	○	○	○	○
1 number plate light on rear grill	●	●	●	●	●
1 beacon lamp magnetic, detachable (LED)	○	○	○	○	○
<b>IGNITION</b>					
Key	●	●	●	●	●
Button "Smart-key" (anti-theft system)	○	○	○	○	○
Anti-theft system (code)	●	●	●	●	●
Auto engine shut down function	●	●	●	●	●
<b>SWITCHES</b>					
Hazard	●	●	●	●	●
DPF	●	●	●	●	●
Parking brake	●	●	●	●	●
FNR shifter	●	●	●	●	●

CABIN & INTERIOR	HL955A	HL955A XT	HL955A HD	HL955A HDXT	HL955A TM
<b>SWITCHES (CONTINUED)</b>					
Emergency steering test	●	●	●	●	●
Pilot cut-off	●	●	●	●	●
Air compressor	○	○	○	○	○
Differential lock	●	●	●	●	●
Differential lock foot switch	○	○	○	○	○
Gear select lever	●	●	●	●	●
Multi function switch (front wiper, washer, horn, etc.)	●	●	●	●	●
Battery master switch	●	●	●	●	●
Engine hood open	●	●	●	●	●
<b>MONITOR</b>					
7-inch, colour, capacitive touchscreen	●	●	●	●	●
Multi language (selectable)	●	●	●	●	●
Multi user (personal settings)	●	●	●	●	●
Hyundai weighing system (control / USB data export)	●	●	●	●	●
Eco gauge & report	●	●	●	●	●
Adjustable access levels (PW protection)	●	●	●	●	●
Android smart phone mirroring	●	●	●	●	●
Entertainment (video, music, etc. via USB)	●	●	●	●	●
E-operator manual	●	●	●	●	●
<b>MEMBRANE SWITCHES</b>					
Main light	●	●	●	●	●
Work light	●	●	●	●	●
Beacon light	○	○	○	○	○
Auto grease	○	○	○	○	○
Auto position (boom / bucket)	●	●	●	●	●
Fine modulation	●	●	●	●	●
Quick coupler	○	○	○	○	●
Ride control	●	●	●	●	●
Weighing system	●	●	●	●	●
Rear wiper & washer	●	●	●	●	●
Mirror defrosting	●	●	●	●	●
Rear view camera activation	●	●	●	●	●
<b>CABIN</b>					
ROPS (ISO 3741) / FOPS (ISO 3449) structure	●	●	●	●	●
Cab pressurized, sound suppression	●	●	●	●	●
Interior rear view mirror	●	●	●	●	●
Dual exterior rear view mirrors (main mirror heated)	●	●	●	●	●
Foldable mirror stay	●	●	●	●	●
Wiper and washer, front and rear (interval function)	●	●	●	●	●
Steering wheel, tilt and telescopic	●	●	●	●	●
Steering wheel with knob	●	●	●	●	●
Roller type sunshade (front window)	●	●	●	●	●
Roller type sunshade (rear window)	○	○	○	○	○
Tinted safety glass	●	●	●	●	●
Sliding window (lockable, left and right)	●	●	●	●	●
LH front hinged door	●	●	●	●	●
Remote cabin door un- / locking, opening	○	○	○	○	○
Cigar lighter & ashtray	●	●	●	●	●
Radio / USB Player / hands-free mobile	●	●	●	●	●
Rubber floor mat	●	●	●	●	●
Wrist rest	●	●	●	●	●
24 V to 12 V DC converter (20 A) with power outlet	●	●	●	●	●
<b>AUTOMATIC CLIMATE CONTROL</b>					
Air conditioner & heater (full automatic)	●	●	●	●	●
Defroster function	●	●	●	●	●
2-stage cabin air filtration	●	●	●	●	●
<b>SEAT</b>					
Mechanical suspended, heated seat	●	●	●	●	●
Air suspended, heated seat	○	○	○	○	○
4-way adjustable, seat mounted armrest	●	●	●	●	●
<b>PERSONAL STORAGE SPACE</b>					
Console box	●	●	●	●	●
Magazine pocket	●	●	●	●	●
Cup holder	●	●	●	●	●
Coat hook	●	●	●	●	●
<b>PEDALS</b>					
Single brake pedal	●	●	●	●	●
Dual brake pedal	○	○	○	○	○
Accel pedal without ECO switch	●	●	●	●	●
Accel pedal with ECO switch	○	○	○	○	○

ENGINE	HL955A	HL955A XT	HL955A HD	HL955A HDXT	HL955A TM
<b>ENGINE, STAGE V</b>					
Alternator, 24V, 95A	●	●	●	●	●
Batteries 2 x 900 CCA / 2 x 12 V	●	●	●	●	●
Cold start system (pre-heater)	●	●	●	●	●
Engine mode (eco, power smart, power)	●	●	●	●	●
Engine fuel priming pump	●	●	●	●	●
Fuel / water separator with water-in-fuel indicator	●	●	●	●	●
Steel fuel tank	●	●	●	●	●
Fuel fill strainer	●	●	●	●	●
DEF fill strainer	●	●	●	●	●
Engine air pre-cleaner	●	●	●	●	●
Centrifugal air pre-cleaner	○	○	○	○	○
Radiator, wide core, stacked	●	●	●	●	●
Regulated, hydraulic driven, auto reversible fan	●	●	●	●	●
Fan guard	●	●	●	●	●
Fuel warmer (integrated in fuel filter)	●	●	●	●	●
Hyundai coolant	●	●	●	●	●
Coolant level sight gauge	●	●	●	●	●
Engine oil level dipstick gauge	●	●	●	●	●
Engine enclosure, lockable	●	●	●	●	●
<b>CLEAN EMISSION MODULE</b>					
DOC, DPF and SCR	●	●	●	●	●

POWER TRAIN	HL955A	HL955A XT	HL955A HD	HL955A HDXT	HL955A TM
<b>TRANSMISSION</b>					
Transmission: computer controlled, electronic soft shift, auto-shift modes, clutch cut-off modes, kick-down features included	●	●	●	●	●
Torque converter	●	●	●	●	●
Transmission F4 / R3	●	●	●	●	●
Transmission F5 / R3 with lock-up clutch	○	○	○	○	○
Transmission oil level sight gauge	●	●	●	●	●
Transmission oil cooler	●	●	●	●	●
Transmission oil cooler with thermostat	○	○	○	○	○
Axle cooling system (front)	○	○	○	○	○
Travel speed limiter (20-40 km/h adjustable)	●	●	●	●	●
<b>FRONT AXLE</b>					
Hydraulic lock differential	●	●	-	-	●
Limited slip differential (30% lock ratio)	○	○	-	-	○
Open differential	○	○	-	-	○
Heavy duty axle & hydraulic lock differential	-	-	●	●	-
<b>REAR AXLE</b>					
Limited Slip Differential	○	○	○	○	○
Open Differential	●	●	●	●	●
<b>BRAKING SYSTEM</b>					
Dual brake circuit	●	●	●	●	●
Service brake (fully enclosed multi-plate wet disc)	●	●	●	●	●
Wheel speed brake	●	●	●	●	●
Parking brake (calliper on transmission output shaft, spring applied, pressure released)	●	●	●	●	●
<b>TYRES</b>					
20.5 R25, Triangle TB516 ★★, L3	●	●	●	●	●
20.5 R25, Michelin XHA2, L3	○	○	○	○	○
Rims only (with wood protection)	○	○	○	○	○

HYDRAULIC SYSTEM	HL955A	HL955A XT	HL955A HD	HL955A HDXT	HL955A TM
MCV 2 circuits (boom, bucket)	●	●	●	●	-
MCV 3 circuits (boom, bucket, aux)	○	○	○	○	●
Boom float position	●	●	●	●	●
Boom holding valve	●	●	●	●	●
EH Control (joystick), RH armrest mounted	●	●	●	●	●
EH Control (fingertip), RH armrest mounted	○	○	○	○	○
EH steering joystick, LH armrest mounted	○	○	○	○	○
Boom kick-out, automatic, lower and upper position	●	●	●	●	●
Bucket positioner, automatic	●	●	●	●	●
Soft end stop (cylinder end stroke dampening)	●	●	●	●	●
Aux circuit flow setting (15 steps)	○	○	○	○	○
Fine control	●	●	●	●	●
Bucket over boom priority (selectable)	●	●	●	●	●
Ride control system	●	●	●	●	●
Extra piping for auxiliary function	○	○	○	○	○
Quick coupler piping	○	○	○	○	○

HYDRAULIC SYSTEM	HL955A	HL955A XT	HL955A HD	HL955A HDXT	HL955A TM
Hydraulic oil cooler	●	●	●	●	●
Hydraulic oil level sight gauge	●	●	●	●	●
Hyundai long life hydraulic oil ISO VG46	●	●	●	●	●
Hyundai long life hydraulic oil ISO VG32	○	○	○	○	○
Hyundai bio hydraulic oil (HBHO)	○	○	○	○	○

OTHER	HL955A	HL955A XT	HL955A HD	HL955A HDXT	HL955A TM
ATTACHMENT					
Loader linkage, sealed	●	●	●	●	●
PZ-bar std lift frame	●	-	●	-	-
PZ- bar extended lift frame	-	●	-	●	-
Parallel-bar lift frame (Tool Master)	-	-	-	-	●
2.8m³ bucket, cutting edge, bolt-on type	○	○	○	○	-
2.8m³ bucket, tooth & segments, bolt-on type	○	○	○	○	-
2.8m³ bucket, cutting edge, bolt-on type, ISO QC	○	○	○	○	○
2.7m³ bucket, cutting edge, bolt-on-type, HCE QC	-	-	-	-	○
HCE type quick coupler	-	-	-	-	●
ISO type quick coupler	○	○	○	○	○
OTHER					
Standard counterweight (500kg)	●	-	●	-	●
Heavy counterweight (800kg)	○	●	○	●	-
Drawbar with pin	●	●	●	●	●
Lift and tie-down eyes	●	●	●	●	●
Vandalism protection cap locks	●	●	●	●	●
Customized paint	○	○	○	○	○
Road homologation (dedicated markets only)	○	○	○	○	○
ACCESSIBILITY					
Handrails (left, right)	●	●	●	●	●
Ladders (left, right)	●	●	●	●	●
Platforms (left, right, front frame)	●	●	●	●	●
Steps (left, right, front frame, engine)	●	●	●	●	●
Door and cabin locks, one key system	●	●	●	●	●
Doors, service access (locking)	●	●	●	●	●
Doors, service access (remote control)	●	●	●	●	●
SERVICE & MAINTENANCE					
Ground level access refilling (fuel + DEF)	●	●	●	●	●
Ground level access lubrication points	●	●	●	●	●
1 piece, electrical opening engine hood	●	●	●	●	●
Swing-out cooler (AC, hydraulic oil)	●	●	●	●	●
Grouped filters	●	●	●	●	●
Remote fluid drain ports	●	●	●	●	●
Tool box, lockable	●	●	●	●	●
Air compressor (gun inside cabin)	○	○	○	○	○
Diagnostic pressure taps	●	●	●	●	●
Auto grease system	○	○	○	○	○
GUARDS					
Fenders (front / rear)	●	●	●	●	●
Mud guard rear	●	●	●	●	●
Transmission	○	○	○	○	○
Cabin guard (front / rear)	○	○	○	○	-
Waste guard package	-	-	○	○	-
Waste guard & rear grill guard package	-	-	○	○	-







# HYUNDAI



HD Hyundai Construction Equipment Europe nv, Hyundailaan 4,  
3980 Tessenderlo, Belgium. Tel: (32) 14-56-2200 Fax: (32) 14-59-3405

Specifications and design are subject to change without notice.  
Pictures of Hyundai Construction Equipment Europe products may  
show other than standard equipment.

**READY TO CHANGE YOUR WORLD?**

Contact your HD Hyundai dealer.  
[hyundai-ce.eu/en/dealer-locator](https://hyundai-ce.eu/en/dealer-locator)