

**DIECI**

**MINI AGRI SMART**

20.4





# ***A NEW CONCENTRATION OF EFFICIENCY***

## ***MINI AGRI 20.4 SMART: SMALL BUT GREAT***

Mini Agri is the ideal vehicle for manoeuvres in tight spaces that, at the same time, is equipped with **great power, excellent handling and precision movement control**.

**Mini Agri 20.4 Smart, completely new**, is the most **compact and agile** among the Dieci agricultural telehandlers, but it still retains the high standards of comfort and versatility of the entire range.

The compact dimensions enhance its suitability for working in extremely narrow spaces, without sacrificing cab space and driver comfort.

A concentration of strength and innovation: **new engine and new hydrostatic transmission** guarantee performance and savings, and the many **patented solutions** exponentially simplify maintenance.



# GREAT PERFORMANCE

## NEW ENGINE

The modern and innovative lines of the new bodywork enclose the new **50 hp Kubota Turbo Diesel Common Rail** engine, with full electronic control and updated to comply with the **Stage V/Tier 4f** emission regulations. The exhaust gases are managed through the **DOC + DPF** (Diesel Oxidation Catalyst + Diesel Particulate Filter) technology and cleaned through automatic regeneration.



4.35 m **BOOM HEIGHT**

2000 kg **MAXIMUM CAPACITY**



## NEW HYDROSTATIC TRANSMISSION

The new **extremely high-performing** hydrostatic transmission always maintains the best speed-power ratio, in any working condition.

The single-speed gearbox accelerates smoothly and progressively the Mini Agri 20.4 Smart to a speed of **25 Km/h** for **unrivalled smoothness and fluidity of movement** executed with **millimetric precision**.

The combined use of the electronic throttle and inching pedal also allow **the vehicle to be driven at slow, controlled speeds**, even with the boom at maximum power.

## BALANCED BOOM

The **perfect balance** between boom dimensions and strength, with **2000 kg load capacity at 4.35 m height**, allows the operator to work without any risk.

## MOMENT LIMITER

To comply with safety standards Dieci has provided the Mini Agri 20.4 Smart with a device for stability data **real time analysis**, which immediately interrupts the aggravating movements if the preset limits are reached.



# RENEWED COMFORT

Despite the small overall dimensions, the comfort you will find inside the Mini Agri 20.4 Smart is exactly the same as in the larger telehandlers, offering work comfort to all operators: **soundproofing**, **height-adjustable steering wheel**, ergonomic **joystick** with capacitive sensor and integrated FNR, air conditioning, storage compartments, stereo system, sun screen and **ergonomic seat** with mechanical or pneumatic suspension option. All these features represent the Dieci high quality standard.

## EASY SPACE

The dashboard layout has been completely re-designed to improve **accessibility** in the cab and make the controls use more intuitive as possible and more visible thanks to the **backlight**.



## ENHANCED CLIMATE CONTROL

The semi-automatic climate control system with **5 outlet vents** has been enhanced: the air ducts and filters have been improved, the controls have been collected in a dedicated dashboard.

## EVERYTHING UNDER CONTROL

Unparalleled technology with the new **on-board computer**: the display shows clearly and in real time all the information needed to use the Mini Agri 20.4 Smart.

## TOTAL VISIBILITY

The **wide windows** of the cab allow a **360° outside view**: the driver's seat is among the most spacious in the category, the wiper keeps the rear window clean and the **new door** further increases the side view.



# HANDLING

## ALL CONTROLS IN ONE HAND

The **new 4 in one joystick** allows **full control** of the Mini Agri 20.4 Smart. The integral travel direction control allows rapid shuttling between forward and reverse. The speed of all movements are easily managed with the **proportional distributor**. The joystick with **deadman sensor** and the **operator presence sensor in the seat** prevent the risk of accidental operation of the controls.



## AGILITY

The high-efficiency steering system provides **3 steering modes** - front, concentric, transverse - and even under high load conditions the steering always feels **light and responsive**.

**Handling and compactness** remain the main features of the Mini Agri Smart 20.4, unparalleled in maneuvering in the tightest spaces.

## INCHING PEDAL

An essential control when movements must be slowed right down or stopped and **maximum hydraulic power** is required for the equipment in use.



# TECHNOLOGY

## NEW ENGINE HOOD

The engine hood design is completely new, allowing a **complete double opening**, through a semiautomatic mechanism that can be operated by a simple button.

## PATENTED ACCESSIBILITY

The Dieci Research & Development department has created a set of patented solutions that increase accessibility to the hydraulic, mechanical parts and to the lights, despite the compact size, for **comfortable and immediate maintenance**.

## HYDRAULIC SYSTEM

The high-capacity hydraulic pump which provides a flow rate, helps speed up manoeuvres, **reducing operating times**.



## DIECI COMPENSATION CYLINDER

Located inside the lifting cylinder, the exclusive system designed by Dieci makes the **thrust on the boom always balanced**, improving its durability over time.

## ISO 24410 MOUNTING FRAME

Available as an optional item, this frame ensures the **full interchangeability of all equipment** normally used on the Skid Steer loaders.

## STURDY CHASSIS

The solid chassis is one of the defining characteristics of Mini Agri 20.4 Smart: all welds are performed by automated robots to ensure **rigidity and total safety**, even under high-load conditions.

# TECHNICAL DATA

## PERFORMANCE

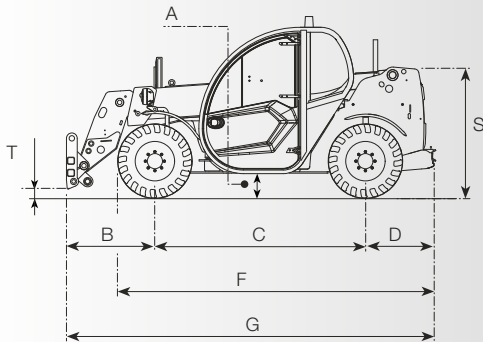
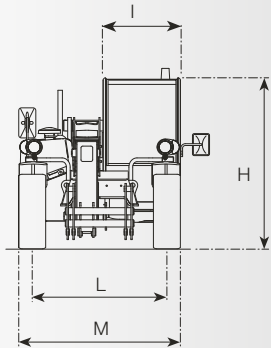
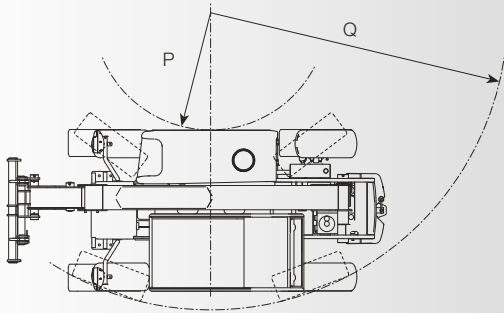
Vehicle model	MINI AGRI 20.4 SMART
Maximum capacity	2000 kg (4409 lb)
Maximum lifting height	4,35 m (14,3 ft)
Pull-out force	3365 daN (7565 lbf)
Towing force	3177 daN (7142 lbf)
Maximum climb angle	56%
Unladen weight	4300 kg (9480 lb)
Max speed (referred to wheels with maximum permitted diameter)	25 km/h (15,5 mph)

## ENGINE

Vehicle model	MINI AGRI 20.4 SMART
Brand	Kubota
Nominal power	37 kW (50 HP)
@rpm	2700 rpm
Displacement	1826 cm³ (111 in³)
Emission standard	Stage V
Exhaust gas treatment	Catalyst + Particulate filter (DOC+DPF)
Intake	Turbo compressor

## TRANSMISSION

Vehicle model	MINI AGRI 20.4 SMART
Transmission type	Single speed Hydrostatic transmission with variable displacement pump
Hydraulic motor	Hydrostatic with continuous automatic adjustment
Reversal	Electro-Hydraulic
Inching	With hydraulic pedal for controlled forward movement



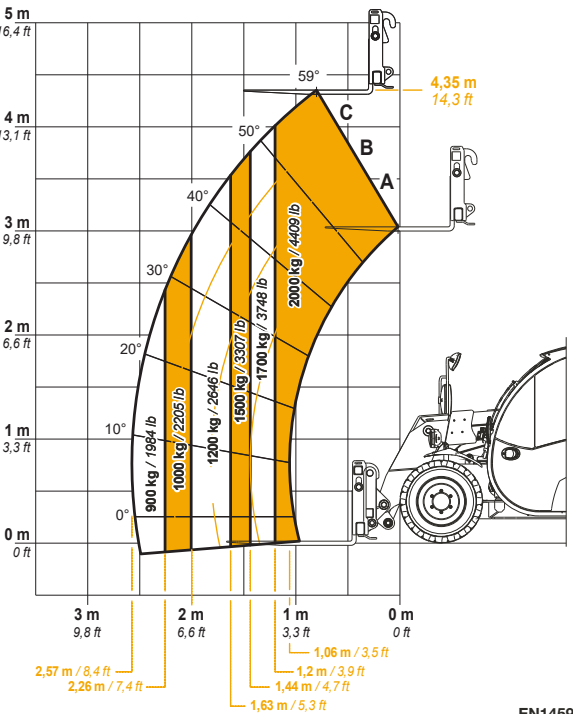
## HYDRAULIC SYSTEM

Vehicle model	MINI AGRI 20.4 SMART
Hydraulic pump type	Gear pump for power steering and movements
Hydraulic pump capacity	93,6 L/min (24,7 gal/min)
Max. operating pressure	25,0 MPa (3626 psi)
Distributor control	Proportional 4in1 Joystick

## DIMENSIONS

Vehicle model	MINI AGRI 20.4 SMART
A	199 mm (7,8 in)
B	827 mm (32,6 in)
C	2250 mm (88,6 in)
D	458 mm (18 in)
F	3405 mm (134,1 in)
G	3534 mm (139,1 in)
H	1929 mm (75,9 in)
I	860 mm (33,9 in)
L	1230 mm (48,4 in)
M	1550 mm (61 in)
P	1340 mm (52,8 in)
Q	3075 mm (121,1 in)
S	1469 mm (57,8 in)
T	200 mm (7,9 in)

MAX  
2000 kg / 4409 lb



EN1459

20.4 SMART



## DIECI SERVICE

### **ASSISTANCE SERVICE ALWAYS AND EVERYWHERE**

General headquarters in Emilia Romagna - over 135,000 square meters and about 400 people employed - and 3 branches in Germany, United Kingdom, France: Dieci is present in over 70 Countries with **an extensive network of over 400 dealers** and authorized service centers.

**Dieci Service**, our global technical assistance service, is developed on this basis: our customers are assisted directly by specialized technicians and every request is satisfied in a very short time. Dieci Service, **within a few hours, can provide interventions and spare parts all over the world.**

Visit [www.dieci.com](http://www.dieci.com) to find the dealer closest to you.

400 **DEALERS**

70 **COUNTRIES**

3 **BRANCHES**





**MINI AGRI SMART**

**20.4**

**DIECI**

[www.dieci.com](http://www.dieci.com)

