

FULL RANGE 2025
CATALOG



AGRICULTURE

DIECI



CONTINUOUS EVOLUTION

Constantly ahead in terms of technological solutions, Dieci continues the evolutionary process of its vehicles, raising the standards even higher with the **New Agriculture Range**.

Reliability, efficiency and comfort have reached unprecedented levels through improved design and instrumentation and the introduction of **patented, futuristic innovations**.

New **Stage V** engines on the whole range, **360° suspended cab** and **new interior, more intuitive and functional diagnostics and controls**, **new chassis** and **new transmissions**, bring tomorrow's agricultural telehandlers into the field today.

SUSPENDED CAB



EXCLUSIVE DIECI

ZERO SHOCK SYSTEM

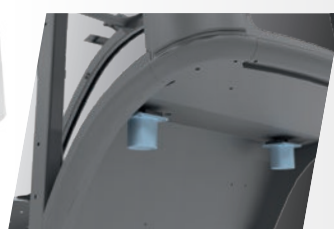
New cab shock-absorbing system, unique in the telehandler sector, capable of effectively dampening the most annoying oscillations on the roughest terrain.

The hydraulic suspension of the cab effectively reduces oscillations and offers a high driving comfort.

The cab is provided with a shock absorption system, with integrated adjustment, consisting of **4 supports that absorb impacts and jolts in every direction**: lateral, vertical, rear and front.



Front Silent Blocks



Rear hydraulic shock absorbers

MORE VALUE

- New Cab by Giugiaro Design
- Refined soft-touch interiors, derived from the automotive industry

MORE LEGROOM

- Improved ergonomics and accessibility
- More space for the operator's legs

MORE COMFORT

- Adjustable steering column and armrest
- Heated seat, 3 suspension system options
- Soundproofing roof, dashboard and mat

MORE VISIBILITY

- Large windows
- Integrated LED worklights - Headlights on the perimeter, on the boom and on the boom head
- 3 wireless cameras - 7" color graphic display
- Electrically adjustable heated wing mirrors

BETTER CLIMATE CONTROL

- Optimized air flows: 6 vents available
- Rear glass and openable roof
- Integrated electric lateral window
- Quick demisting of the windows
- Double air filter
- Operator protected against dust and odors



TRANSMISSION

**5 SYSTEMS AVAILABLE
ALWAYS IMPECCABLE WORK**

SINGLE-SPEED HYDROSTATIC

EFFICIENCY GUARANTEED OVER TIME

MORE POWERFUL EASIER MORE RELIABLE MORE SAVINGS

- **Extremely high performance:** best speed-power ratio maintained in all working conditions
- **Guaranteed traction and speed,** with no need to change gear
- Up to 38 Km/h at progressive speed: **unrivalled fluidity of movement** and **millimetric precision** in small movements
- Electronic accelerator and Inching pedal: **slow and controlled movement**, even with the boom at full power
- **Great comfort:** no gear changes, no jolts

Mini Agri Mini Agri Smart Agri Star

DUAL SPEED HYDROSTATIC

- **Electronic control:** maximum forward travel precision even at full speed
- 1st gear at 19 km/h
- Maximum speed 40 km/h

Agri Farmer Agri Max Agri Pivot

VARIO SYSTEM

4 DRIVING MODES

NORMAL

ECO

LOADER

CREEPER

- **Integrated electronic control:** power, responsiveness and control in manoeuvres
- **Wide speed range:** from 0 to 40 km/h with no need to change gear
- **Cruise Control:** electronic accelerator and limiter

Agri Plus

Agri Max

SHIFT ON FLY

GEAR SHIFT IN MOTION

MORE UPHILL SAFETY

MORE COMFORT ON THE ROAD

- Hydrostatic transmission with **2-speed** mechanical gearbox
- Shift on Fly gearbox: possibility to **change gear while moving**
- Shift controls on the joystick: **less time spent on manoeuvres**

Agri Pivot

HVT-1

**CONTINUOUSLY VARIABLE
HYDROSTATIC-MECHANICAL CVT**

- **The world's first telehandler** with epicyclic gear train transmission
- Speed 50 km/h **without torque interruption**
- **Maximum torque delivered to the wheels** in stall conditions and at low speed
- Reduced engine rpm = **low fuel consumption and low noise**
- **Smooth driving** with the vehicle always in gear even when towing

Agri Max Power X2



MINI AGRI SMART

20.4

SMALL GIANT



HYDRO MONO

Agile in small spaces, precise in all movements. The high strength of the boom makes it possible to **handle loads at great heights** without any risk.

The **3 steering modes** - front, concentric, transverse - allow **smooth driving** even with the heaviest loads.

The dashboard layout has been completely revised to improve **accessibility** to the roomy cab.



TILTING BALLAST

NEW ENGINE HOOD

90° ROTATING RADIATOR

NEW PATENTED INNOVATION

The Dieci Research & Development department has created a set of patented solutions that improve accessibility to components for **easy and immediate maintenance**.



DIMENSIONS



MINI AGRI

26.6

FLUID AND PRECISE



HYDRO MONO

Unrivalled fluidity of movement and millimetric precision in small movements.

Controlled vehicle travel, even at full boom speed, through electronic accelerator and inching pedal.

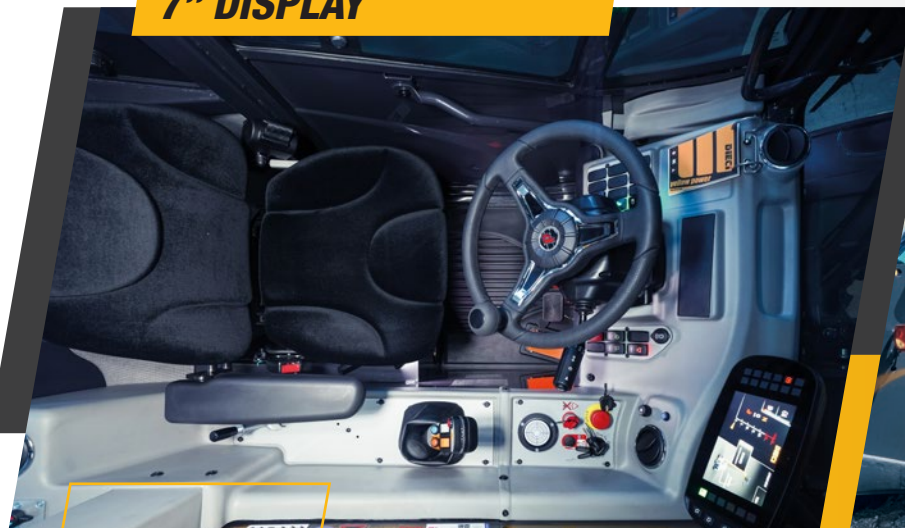
Pneumatic suspension on the boom reduces oscillations to a minimum.

The new hydraulic pump **reduces working time by 15%**.

DIMENSIONS



7" DISPLAY



AGRI FARMER

37.7 | 30.9 34.7 | 32.9

THE RIGHT SIZE



NEW SIZES, MORE SIZES

The Agri Farmer family now offers new sizes. According to the requirement, the most **appropriate size** of vehicle can be selected for the specific job.

The different models are available in **different widths and heights**, while maintaining the same agility and efficiency.



HYDROSTATIC TRANSMISSION
WITH ELECTRONIC CONTROL



AGRI STAR

37.7 | 40.8 | 38.10

AGILE AND FAST



A high-performance vehicle for a streamlined and efficient production cycle.

The **single-speed hydrostatic transmission** eliminates gear changes and jerks and produces high towing force even at high speeds.

The **creeper function** on the accelerator allows the operator to adjust the speed without using the inching control and to maintain constant engine speed and oil flow, for efficient use of equipment such as sweepers or straw spreaders.



AGRI PLUS

42.7 | 40.10

PURE TECHNOLOGY



VARIO SYSTEM TRANSMISSION



4 modes: Normal, ECO, Loader, Creeper

Cruise Control

From 0 to **40 km/h** with no need to change gear

Integrated electronic control



NEW HIGH TECH BOOM

Advanced functions: Shake, Wall, Memory.

Dual pump with Energy Saving system, for reactive and precise boom even at high power.



AGRI MAX

50.8 | 65.8 | 60.9 | 75.10

LARGE AND PERFORMING



NEW HIGH TECH BOOM

The single extension arm makes it possible to reach **10 meters** with maximum stability and accuracy of movement.

Advanced functions: Shake, Wall, Memory.



VARIO SYSTEM TRANSMISSION



4 modes: Normal, ECO, Loader, Creeper

Cruise Control

From 0 to **40 km/h** with no need to change gear

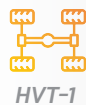
Integrated electronic control



AGRI MAX POWER **X2**

50.8 | 65.8 | 60.9

DUAL POWER, MAXIMUM EFFICIENCY



THE FIRST IN THE WORLD

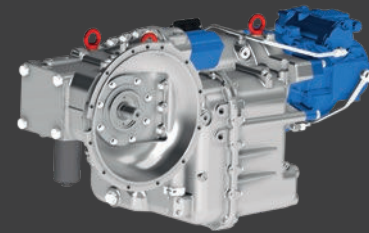
Two power outputs combined by a **mechanical** and a **hydrostatic** branch connected by a **planetary gear**.

Continuous variation over 50 km/h without torque interruption, greater **precision and control** of manoeuvres and speeds.

Choice of softer or more aggressive settings for all **operating requirements**.



HVT-1 TRANSMISSION



Power Split technology

Tows up to **30 tonnes**

Up to **50 km/h**



The highest performing vehicle in the Dieci agricultural range features the mechatronic advantages of the **HVT1 transmission**.

For the first time in the world, a telehandler is fitted with this unique innovative transmission.



**CONTINUOUSLY VARIABLE
HYDROSTATIC-MECHANICAL CVT TRANSMISSION**

AGRI PIVOT

T60 | T70 | T80

TOTAL INNOVATION



SHIFT ON FLY
HYDRO DUAL

NEW HIGH TECH BOOM

Advanced functions: **Shake, Wall, Memory, Floating.**

Stronger boom, greater reach, highly tipable bucket.

Flow Sharing: all vehicle movements at the same time.



NEW NEW COMFORT

Renewed cab: **more legroom**, completely redesigned dashboard, new monitor.

Main controls collected on the **new armrest**, integrated into the seat.

Improved air conditioning and soundproofing, **redesigned engine hood** for greater accessibility.



NEW SHIFT ON FLY

Gear changes **without stopping.**

Automatic uphill braking.



FULL ELECTRIC

Dieci's innovation continues to grow, bringing to the market the new **100% electric telehandlers**.

Maneuverability, versatility, and cost-effectiveness meet the advantages of electric power, allowing efficient operation in any working condition.

Compact, agile, and high-performing telehandlers, ideal for indoor use, urban areas, greenhouses, or **environmentally restricted zones**.

ELECTRIC TECHNOLOGY

Thanks to advanced technological solutions, the **electric telehandler** offers significant operational benefits:

Reduced noise levels

Easy and quick battery change

Low maintenance

No usage limitations

RECHARGING SYSTEM

3 charging sockets as standard, all connected to the onboard battery charger system.



EXTERNAL FAST CHARGERS



MINI AGRI

BATTERY



Dual lithium battery (LiFePo4)*

* ECE R100 approved

Modular technology: **optimized costs and efficiency** thanks to an **expandable battery pack**.



MINI AGRI SMART

BATTERY



Lithium battery (LiFePo4)*

* ECE R100 approved

Compact size and functional design: spacious cab, controls, and information always accessible to the operator.



TECHNICAL DATA

DIECI AGRI RANGE

SCAN THE QR CODE FOR COMPLETE AND UPDATED DATA



MINI AGRI-e



MINI AGRI-e SMART



Data refers to the CE market only.
For all other markets, scan the QR code.



DOCC70000106-EN-04



The vehicles shown in this catalog can be equipped with standard attachments or equipment, on request or not available, according to the versions. Dieci Srl reserves the right to modify the specifications described and illustrated at any time and without prior notice. Non-contractual document. Non-exhaustive specification list. The photos and diagrams contained in this brochure are provided for consultation and for information purposes.

DIECI

FULL RANGE 2025 CATALOG

AGRICULTURE



www.dieci.com